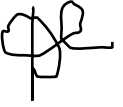


Worklist: 892

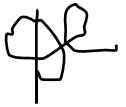
reviewed 11-4-15 by BAW

B. Wylee

11/4/2015



<u>LAB_CASE</u>	<u>ITEM</u>	<u>TASK_ID</u>	<u>DESCRIPTION</u>	
M2015-3402	2	42971	6.1.1 Blood LCMS-QQQ Benzoc	
P2015-2018	1	42956	6.1.1 Blood LCMS-QQQ Benzoc	
P2015-2025	1	44690	6.1.1 Blood LCMS-QQQ Benzoc	
P2015-2033	1	44691	6.1.1 Blood LCMS-QQQ Benzoc	
P2015-2034	1	44692	6.1.1 Blood LCMS-QQQ Benzoc	
P2015-2083	1	42959	6.1.1 Blood LCMS-QQQ Benzoc	
P2015-2092	1	42961	6.1.1 Blood LCMS-QQQ Benzoc	
P2015-2113	1	42964	6.1.1 Blood LCMS-QQQ Benzoc	
P2015-2123	1	42965	6.1.1 Blood LCMS-QQQ Benzoc	
P2015-2161	1	42966	6.1.1 Blood LCMS-QQQ Benzoc	



Worklist Report

Worklist Path:	I:\CDA\CANN_BZ_Blood_DD_CS_10302015cda.wkl
Date Modified:	11/03/2015 09:43:57 AM
Date Printed:	11/03/2015 12:00:50 PM

Worklist Run Parameters

Operator Name:	62340
Run Type:	Standard Start
Part of Method to Run:	Acquisition Only
Execution for Acquisition-DA:	Synchronous
Acquisition Method Path:	D:\MassHunter\Methods
DA Method Path:	D:\MassHunter\methods
Data File Path:	D:\2015 data\Pocatello run 10-30-2015
Pre-Worklist Script:	---
Post-Worklist Script:	SCP_InstrumentStandby()\{MH_Acq_Scripts.exe}
Acquisition Clean Up Script:	SCP_InstrumentStandby()\{MH_Acq_Scripts.exe}
Overlapped Injection:	No
Clear sample selection after run:	Yes
Wait Time for Ready(Min):	10
Threshold Disk Value(GB):	10
Comment:	---

Plate Barcode Information

Plate	Barcode
P1	Verified that all dd ALS vials were in the correct rack positions. <i>pe</i>
P2	

Worklist Table

Sample Position	Sample Name	Method	Data File	Sample Type	Level Name	Comment	Info.
P1-A1	Blank	isp cannabinoids 103015.m	dd-Cann-Blank1-r001.d	Blank		AM 6.1.2 Cannabinoids by LCQQQ	
P1-A1	Blank	isp cannabinoids 103015.m	dd-Cann-Blank2-r001.d	Blank		AM 6.1.2 Cannabinoids by LCQQQ	
P1-A2	Blood: 1_5 ng/mL	isp cannabinoids 103015.m	dd-Cann-B_CAL1-r001.d	Calibration	1	AM 6.1.2 Cannabinoids by LCQQQ	c-THC @5ng/mL, all others @1 ng/mL
P1-A3	Blood: 2_10 ng/mL	isp cannabinoids 103015.m	dd-Cann-B_CAL2_r001.d	Calibration	2	AM 6.1.2 Cannabinoids by LCQQQ	c-THC @10ng/mL, all others @2 ng/mL
P1-A4	Blood: 5_25 ng/mL	isp cannabinoids 103015.m	dd-Cann-B_CAL3_r001.d	Calibration	3	AM 6.1.2 Cannabinoids by LCQQQ	c-THC @25ng/mL, all others @5 ng/mL
P1-A5	Blood: 10_50 ng/mL	isp cannabinoids 103015.m	dd-Cann-B_CAL4_r001.d	Calibration	4	AM 6.1.2 Cannabinoids by LCQQQ	c-THC @50ng/mL, all others @10 ng/mL
P1-A6	Blood: 25_125 ng/mL	isp cannabinoids 103015.m	dd-Cann-B_CAL5_r001.d	Calibration	5	AM 6.1.2 Cannabinoids by LCQQQ	c-THC @125ng/mL, all others @25 ng/mL
P1-A7	Blood: 50_250 ng/mL	isp cannabinoids 103015.m	dd-Cann-B_CAL6_r001.d	Calibration	6	AM 6.1.2 Cannabinoids by LCQQQ	c-THC @250ng/mL, all others @50 ng/mL
P1-A8	Blood: 100_500 ng/mL	isp cannabinoids 103015.m	dd-Cann-B_CAL7_r001.d	Calibration	7	AM 6.1.2 Cannabinoids by LCQQQ	c-THC @500ng/mL, all others @100 ng/mL
P1-A1	Blank	isp cannabinoids 103015.m	dd-Cann-Carryover blank1_r001.d	Blank		AM 6.1.2 Cannabinoids by LCQQQ	
P1-A9		isp cannabinoids 103015.m	dd-Cann-B-NC-r001.d	Sample			



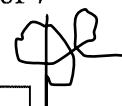
Sample Position	Sample Name	Method	Data File	Sample Type	Level Name	Comment	Info.
	Blood Negative Control					AM 6.1.2 Cannabinoids by LCQQQ	Negative Blood UTAK Lot B0689
P1-B1	Blood 3_15ngmL	isp cannabinoids 103015.m	dd-Cann-B-3_15-r001.d	Sample		AM 6.1.2 Cannabinoids by LCQQQ	c-THC @15ng/mL, all others @3 ng/mL
P1-A9	Blank M2015-3147-1	isp cannabinoids 103015.m	dd-Cann-M2015-3147-1_BLK_r001.d	Blank		AM 6.1.2 Cannabinoids by LCQQQ	
P1-B2	M2015-3147-1	isp cannabinoids 103015.m	dd-Cann-M2015-3147-1-r001.d	Sample		AM 6.1.2 Cannabinoids by LCQQQ	Blood
P1-A9	Blank M2015-3227-1	isp cannabinoids 103015.m	dd-Cann-M2015-3227-1_BLK_r001.d	Blank		AM 6.1.2 Cannabinoids by LCQQQ	
P1-B3	M2015-3227-1	isp cannabinoids 103015.m	dd-Cann-M2015-3227-1-r001.d	Sample		AM 6.1.2 Cannabinoids by LCQQQ	Blood
P1-A9	Blank M2015-3237-2	isp cannabinoids 103015.m	dd-Cann-M2015-3237-2_BLK_r001.d	Blank		AM 6.1.2 Cannabinoids by LCQQQ	
P1-B4	M2015-3237-2	isp cannabinoids 103015.m	dd-Cann-M2015-3237-2-r001.d	Sample		AM 6.1.2 Cannabinoids by LCQQQ	Blood
P1-A9	Blank M2015-3289-1	isp cannabinoids 103015.m	dd-Cann-M2015-3289-1_BLK_r001.d	Blank		AM 6.1.2 Cannabinoids by LCQQQ	
P1-B5	M2015-3289-1	isp cannabinoids 103015.m	dd-Cann-M2015-3289-1-r001.d	Sample		AM 6.1.2 Cannabinoids by LCQQQ	Blood
P1-A9	Blank M2015-3360-1	isp cannabinoids 103015.m	dd-Cann-M2015-3360-1_BLK_r001.d	Blank		AM 6.1.2 Cannabinoids by LCQQQ	
P1-B6	M2015-3360-1	isp cannabinoids 103015.m	dd-Cann-M2015-3360-1-r001.d	Sample		AM 6.1.2 Cannabinoids by LCQQQ	Blood
P1-A9	Blank P2015-2017-1	isp cannabinoids 103015.m	dd-Cann-P2015-2017-1_BLK_r001.d	Blank		AM 6.1.2 Cannabinoids by LCQQQ	
P1-B7	P2015-2017-1	isp cannabinoids 103015.m	dd-Cann-P2015-2017-1-r001.d	Sample		AM 6.1.2 Cannabinoids by LCQQQ	Blood
P1-A9	Blank P2015-2018-1	isp cannabinoids 103015.m	dd-Cann-P2015-2018-1_BLK_r001.d	Blank		AM 6.1.2 Cannabinoids by LCQQQ	
P1-B8	P2015-2018-1	isp cannabinoids 103015.m	dd-Cann-P2015-2018-1-r001.d	Sample		AM 6.1.2 Cannabinoids by LCQQQ	Blood
P1-A9	Blank P2015-2068-1	isp cannabinoids 103015.m	dd-Cann-P2015-2068-1_BLK_r001.d	Blank		AM 6.1.2 Cannabinoids by LCQQQ	
P1-B9	P2015-2068-1	isp cannabinoids 103015.m	dd-Cann-P2015-2068-1-r001.d	Sample		AM 6.1.2 Cannabinoids by LCQQQ	Blood
P1-A9	Blank P2015-2083-1	isp cannabinoids 103015.m	dd-Cann-P2015-2083-1_BLK_r001.d	Blank		AM 6.1.2 Cannabinoids by LCQQQ	
P1-C1	P2015-2083-1	isp cannabinoids 103015.m	dd-Cann-P2015-2083-1-r001.d	Sample		AM 6.1.2 Cannabinoids by LCQQQ	Blood
P1-A9	Blank P2015-2092-1	isp cannabinoids 103015.m	dd-Cann-P2015-2092-1_BLK_r001.d	Blank		AM 6.1.2 Cannabinoids by LCQQQ	
P1-C2	P2015-2092-1	isp cannabinoids 103015.m	dd-Cann-P2015-2092-1-r001.d	Sample		AM 6.1.2 Cannabinoids by LCQQQ	Blood
P1-A9	Blank	isp cannabinoids 103015.m	dd-Cann-Carryover blank2_r001.d	Blank		AM 6.1.2 Cannabinoids by LCQQQ	
P1-C3	Blood 25_125ngmL	isp cannabinoids 103015.m	dd-Cann-B-25_125-r001.d	Sample		AM 6.1.2 Cannabinoids by LCQQQ	c-THC @125ng/mL, all others @25 ng/mL
P1-A9		isp cannabinoids 103015.m		Blank			



Sample Position	Sample Name	Method	Data File	Sample Type	Level Name	Comment	Info.
	Blank P2015-2097-1		dd-Cann-P2015-2097-1_BLK_r001.d			AM 6.1.2 Cannabinoids by LCQQQ	
P1-C4	P2015-2097-1	isp cannabinoids 103015.m	dd-Cann-P2015-2097-1-r001.d	Sample		AM 6.1.2 Cannabinoids by LCQQQ	Blood
P1-A9	Blank P2015-2184-1	isp cannabinoids 103015.m	dd-Cann-P2015-2184-1_BLK_r001.d	Blank		AM 6.1.2 Cannabinoids by LCQQQ	
P1-C5	P2015-2184-1	isp cannabinoids 103015.m	dd-Cann-P2015-2184-1-r001.d	Sample		AM 6.1.2 Cannabinoids by LCQQQ	Blood
P1-A9	Blank	isp cannabinoids 103015.m	dd-Cann-Blank3-r001.d	Blank		AM 6.1.2 Cannabinoids by LCQQQ	
P2-A9	Blank	isp cannabinoids 103015.m	cs-Cann-Blank2-r001.d	Blank		AM 6.1.2 Cannabinoids by LCQQQ	
P2-A2	Blood: 1_5 ng/mL	isp cannabinoids 103015.m	cs-Cann-B_CAL1-r001.d	Calibration	1	AM 6.1.2 Cannabinoids by LCQQQ	c-THC @5ng/mL, all others @1 ng/mL
P2-A3	Blood: 2_10 ng/mL	isp cannabinoids 103015.m	cs-Cann-B_CAL2_r001.d	Calibration	2	AM 6.1.2 Cannabinoids by LCQQQ	c-THC @10ng/mL, all others @2 ng/mL
P2-A4	Blood: 5_25 ng/mL	isp cannabinoids 103015.m	cs-Cann-B_CAL3_r001.d	Calibration	3	AM 6.1.2 Cannabinoids by LCQQQ	c-THC @25ng/mL, all others @5 ng/mL
P2-A5	Blood: 10_50 ng/mL	isp cannabinoids 103015.m	cs-Cann-B_CAL4_r001.d	Calibration	4	AM 6.1.2 Cannabinoids by LCQQQ	c-THC @50ng/mL, all others @10 ng/mL
P2-A6	Blood: 25_125 ng/mL	isp cannabinoids 103015.m	cs-Cann-B_CAL5_r001.d	Calibration	5	AM 6.1.2 Cannabinoids by LCQQQ	c-THC @125ng/mL, all others @25 ng/mL
P2-A7	Blood: 50_250 ng/mL	isp cannabinoids 103015.m	cs-Cann-B_CAL6_r001.d	Calibration	6	AM 6.1.2 Cannabinoids by LCQQQ	c-THC @250ng/mL, all others @50 ng/mL
P2-A8	Blood: 100_500 ng/mL	isp cannabinoids 103015.m	cs-Cann-B_CAL7_r001.d	Calibration	7	AM 6.1.2 Cannabinoids by LCQQQ	c-THC @500ng/mL, all others @100 ng/mL
P2-A1	Blank	isp cannabinoids 103015.m	cs-Cann-Carryover blank1_r001.d	Blank		AM 6.1.2 Cannabinoids by LCQQQ	
P2-A9	Blood Negative Control	isp cannabinoids 103015.m	cs-Cann-B-NC-r001.d	Sample		AM 6.1.2 Cannabinoids by LCQQQ	Negative Blood UTAK Lot B0689
P2-B1	Blood 3_15ng/mL	isp cannabinoids 103015.m	cs-Cann-B-3_15-r001.d	Sample		AM 6.1.2 Cannabinoids by LCQQQ	c-THC @15ng/mL, all others @3 ng/mL
P2-A9	Blank M2015-2859-1	isp cannabinoids 103015.m	cs-Cann-M2015-2859-1_BLK_r001.d	Blank		AM 6.1.2 Cannabinoids by LCQQQ	
P2-B2	M2015-2859-1	isp cannabinoids 103015.m	cs-Cann-M2015-2859-r001.d	Sample		AM 6.1.2 Cannabinoids by LCQQQ	Blood
P2-A9	Blank M2015-3180-1	isp cannabinoids 103015.m	cs-Cann-M2015-3180-1_BLK_r001.d	Blank		AM 6.1.2 Cannabinoids by LCQQQ	
P2-B3	M2015-3180-1	isp cannabinoids 103015.m	cs-Cann-M2015-3180-1-r001.d	Sample		AM 6.1.2 Cannabinoids by LCQQQ	Blood
P2-A9	Blank M2015-3430-1	isp cannabinoids 103015.m	cs-Cann-M2015-3430-1_BLK_r001.d	Blank		AM 6.1.2 Cannabinoids by LCQQQ	
P2-B4	M2015-3430-1	isp cannabinoids 103015.m	cs-Cann-M2015-3430-1-r001.d	Sample		AM 6.1.2 Cannabinoids by LCQQQ	Blood
P2-A9		isp cannabinoids 103015.m	cs-Cann-P2015-2006-1_BLK_r001.d	Blank			



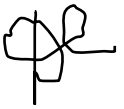
Sample Position	Sample Name	Method	Data File	Sample Type	Level Name	Comment	Info.
	Blank P2015-2006-1					AM 6.1.2 Cannabinoids by LCQQQ	
P2-B5	P2015-2006-1	isp cannabinoids 103015.m	cs-Cann-P2015-2006-1-r001.d	Sample		AM 6.1.2 Cannabinoids by LCQQQ	Blood
P2-A9	Blank P2015-2088-2	isp cannabinoids 103015.m	cs-Cann-P2015-2088-2_BLK_r001.d	Blank		AM 6.1.2 Cannabinoids by LCQQQ	
P2-B6	P2015-2088-2	isp cannabinoids 103015.m	cs-Cann-P2015-2088-2-r001.d	Sample		AM 6.1.2 Cannabinoids by LCQQQ	Blood
P2-A9	Blank P2015-2128-1	isp cannabinoids 103015.m	cs-Cann-P2015-2128-11_BLK_r001.d	Blank		AM 6.1.2 Cannabinoids by LCQQQ	
P2-B7	P2015-2128-1	isp cannabinoids 103015.m	cs-Cann-P2015-2128-1-r001.d	Sample		AM 6.1.2 Cannabinoids by LCQQQ	Blood
P2-A9	Blank P2015-2191-1	isp cannabinoids 103015.m	cs-Cann-P2015-2191-1_BLK_r001.d	Blank		AM 6.1.2 Cannabinoids by LCQQQ	
P2-B8	P2015-2191-1	isp cannabinoids 103015.m	cs-Cann-P2015-2191-1-r001.d	Sample		AM 6.1.2 Cannabinoids by LCQQQ	Blood
P2-A9	Blank P2015-2208-1	isp cannabinoids 103015.m	cs-Cann-P2015-2208-1_BLK_r001.d	Blank		AM 6.1.2 Cannabinoids by LCQQQ	
P2-B9	P2015-2208-1	isp cannabinoids 103015.m	cs-Cann-P2015-2208-1-r001.d	Sample		AM 6.1.2 Cannabinoids by LCQQQ	Blood
P2-A9	Blank P2015-2209-1	isp cannabinoids 103015.m	cs-Cann-P2015-2209-1_BLK_r001.d	Blank		AM 6.1.2 Cannabinoids by LCQQQ	
P2-C1	P2015-2209-1	isp cannabinoids 103015.m	cs-Cann-P2015-2209-1-r001.d	Sample		AM 6.1.2 Cannabinoids by LCQQQ	Blood
P2-A9	Blank P2015-2243-1	isp cannabinoids 103015.m	cs-Cann-P2015-2243-1_BLK_r001.d	Blank		AM 6.1.2 Cannabinoids by LCQQQ	
P2-C2	P2015-2243-1	isp cannabinoids 103015.m	cs-Cann-P2015-2243-1-r001.d	Sample		AM 6.1.2 Cannabinoids by LCQQQ	Blood
P2-A1	Blank	isp cannabinoids 103015.m	cs-Cann-Carryover blank2_r001.d	Blank		AM 6.1.2 Cannabinoids by LCQQQ	
P2-C3	Blood 25_125ng/mL	isp cannabinoids 103015.m	cs-Cann-B-25_125-r001.d	Sample		AM 6.1.2 Cannabinoids by LCQQQ	c-THC @125ng/mL, all others @25 ng/mL
P2-A9	Blank P2015-2248-1	isp cannabinoids 103015.m	cs-Cann-P2015-2248-1_BLK_r001.d	Blank		AM 6.1.2 Cannabinoids by LCQQQ	
P2-C4	P2015-2248-1	isp cannabinoids 103015.m	cs-Cann-P2015-2248-1-r001.d	Sample		AM 6.1.2 Cannabinoids by LCQQQ	Blood
P2-A9	Blank P2015-2267-1	isp cannabinoids 103015.m	cs-Cann-P2015-2267-1_BLK_r001.d	Blank		AM 6.1.2 Cannabinoids by LCQQQ	
P2-C5	P2015-2267-1	isp cannabinoids 103015.m	cs-Cann-P2015-2267-1-r001.d	Sample		AM 6.1.2 Cannabinoids by LCQQQ	Blood
P2-A9	Blank P2015-1673-1	isp cannabinoids 103015.m	cs-Cann-P2015-1673-1_BLK_r001.d	Blank		AM 6.1.2 Cannabinoids by LCQQQ	
P2-C6	P2015-1673-1	isp cannabinoids 103015.m	cs-Cann-P2015-1673-1-r001.d	Sample		AM 6.1.2 Cannabinoids by LCQQQ	Blood
P2-A9	Blank P2015-1677-1	isp cannabinoids 103015.m	cs-Cann-P2015-1677-1_BLK_r001.d	Blank		AM 6.1.2 Cannabinoids by LCQQQ	
P2-C7	P2015-1677-1	isp cannabinoids 103015.m	cs-Cann-P2015-1677-1-r001.d	Sample		AM 6.1.2 Cannabinoids by LCQQQ	Blood
P2-A9		isp cannabinoids 103015.m	cs-Cann-P2015-1794-1_BLK_r001.d	Blank			



Sample Position	Sample Name	Method	Data File	Sample Type	Level Name	Comment	Info.
	Blank P2015-1794-1					AM 6.1.2 Cannabinoids by LCQQQ	
P2-C8	P2015-1794-1	isp cannabinoids 103015.m	cs-Cann-P2015-1794-1-r001.d	Sample		AM 6.1.2 Cannabinoids by LCQQQ	Blood
P1-F9	Blank	D:\MassHunter\methods\Benzos_Z_Drugs_ACN_FA_ISP.m	dd-Blank1-r002.d	Blank		AM 6.1.1 Benzo and Z by LCQQQ	
P1-F9	Blank	D:\MassHunter\methods\Benzos_Z_Drugs_ACN_FA_ISP.m	dd-Blank2-r002.d	Blank		AM 6.1.1 Benzo and Z by LCQQQ	
P1-F8	5 ng/mL	D:\MassHunter\methods\Benzos_Z_Drugs_ACN_FA_ISP.m	dd-5 ng/mL-r001.d	Calibration	1	AM 6.1.1 Benzo and Z by LCQQQ	
P1-F7	10 ng/mL	D:\MassHunter\methods\Benzos_Z_Drugs_ACN_FA_ISP.m	dd-10 ng/mL-r001.d	Calibration	2	AM 6.1.1 Benzo and Z by LCQQQ	
P1-F6	25 ng/mL	D:\MassHunter\methods\Benzos_Z_Drugs_ACN_FA_ISP.m	dd-25 ng/mL_r001.d	Calibration	3	AM 6.1.1 Benzo and Z by LCQQQ	
P1-F5	50 ng/mL	D:\MassHunter\methods\Benzos_Z_Drugs_ACN_FA_ISP.m	dd-50 ng/mL_r001.d	Calibration	4	AM 6.1.1 Benzo and Z by LCQQQ	
P1-F4	100 ng/mL	D:\MassHunter\methods\Benzos_Z_Drugs_ACN_FA_ISP.m	dd-100 ng/mL_r001.d	Calibration	5	AM 6.1.1 Benzo and Z by LCQQQ	
P1-F3	500 ng/mL	D:\MassHunter\methods\Benzos_Z_Drugs_ACN_FA_ISP.m	dd-500 ng/mL_r001.d	Calibration	6	AM 6.1.1 Benzo and Z by LCQQQ	
P1-F2	1000 ng/mL	D:\MassHunter\methods\Benzos_Z_Drugs_ACN_FA_ISP.m	dd-1000 ng/mL_r001.d	Calibration	7	AM 6.1.1 Benzo and Z by LCQQQ	
P1-F1	3000 ng/mL	D:\MassHunter\methods\Benzos_Z_Drugs_ACN_FA_ISP.m	dd-3000 ng/mL_r001.d	Calibration	8	AM 6.1.1 Benzo and Z by LCQQQ	
P1-F9	Blank	D:\MassHunter\methods\Benzos_Z_Drugs_ACN_FA_ISP.m	dd-Carryover blank1_r002.d	Blank		AM 6.1.1 Benzo and Z by LCQQQ	
P1-E9	Negative Blood Control	D:\MassHunter\methods\Benzos_Z_Drugs_ACN_FA_ISP.m	dd-NC-B_r001.d	Sample		AM 6.1.1 Benzo and Z by LCQQQ	UTAK Negative Whole Blood LOT B0689
P1-E8	Positive Blood Control	D:\MassHunter\methods\Benzos_Z_Drugs_ACN_FA_ISP.m	dd-PC-B-BZ-r001.d	Sample		AM 6.1.1 Benzo and Z by LCQQQ	200 ng/mL Benzodiazepines Mix Cerilliant lot FE012413-02 in neg LOT B0130
P1-E9	Blank - M2015-3402-2	D:\MassHunter\methods\Benzos_Z_Drugs_ACN_FA_ISP.m	dd-Carryover blank-M2015-3402-2_r001.d	Blank		AM 6.1.1 Benzo and Z by LCQQQ	
P1-E7	M2015-3402-2	D:\MassHunter\methods\Benzos_Z_Drugs_ACN_FA_ISP.m	dd-M2015-3402-2-r001.d	Sample		AM 6.1.1 Benzo and Z by LCQQQ	Blood
P1-E9	Blank - P2015-2018-1	D:\MassHunter\methods\Benzos_Z_Drugs_ACN_FA_ISP.m	dd-Carryover blank-P2015-2018-1_r001.d	Blank		AM 6.1.1 Benzo and Z by LCQQQ	
P1-E6	P2015-2018-1	D:\MassHunter\methods\Benzos_Z_Drugs_ACN_FA_ISP.m	dd-P2015-2018-1-r001.d	Sample		AM 6.1.1 Benzo and Z by LCQQQ	Blood
P1-E9	Blank - P2015-2025-1	D:\MassHunter\methods\Benzos_Z_Drugs_ACN_FA_ISP.m	dd-Carryover blank-P2015-2025-1_r001.d	Blank		AM 6.1.1 Benzo and Z by LCQQQ	
P1-E5	P2015-2025-1	D:\MassHunter\methods\Benzos_Z_Drugs_ACN_FA_ISP.m	dd-P2015-2025-1-r001.d	Sample		AM 6.1.1 Benzo and Z by LCQQQ	Blood
P1-E9	Blank - P2015-2033-1	D:\MassHunter\methods\Benzos_Z_Drugs_ACN_FA_ISP.m	dd-Carryover blank-P2015-2033-1_r001.d	Blank		AM 6.1.1 Benzo and Z by LCQQQ	
P1-E4	P2015-2033-1	D:\MassHunter\methods\Benzos_Z_Drugs_ACN_FA_ISP.m	dd-P2015-2033-1-r001.d	Sample		AM 6.1.1 Benzo and Z by LCQQQ	Blood
P1-E9	Blank - P2015-2034-1	D:\MassHunter\methods\Benzos_Z_Drugs_ACN_FA_ISP.m	dd-Carryover blank-P2015-2034-1_r001.d	Blank		AM 6.1.1 Benzo and Z by LCQQQ	
P1-E3		D:\MassHunter\methods\Benzos_Z_Drugs_ACN_FA_ISP.m		Sample			Blood



Sample Position	Sample Name	Method	Data File	Sample Type	Level Name	Comment	Info.
	P2015-2034-1		dd-P2015-2034-1-r001.d			AM 6.1.1 Benzo and Z by LCQQQ	
P1-E9	Blank - P2015-2083-1	D:\MassHunter\methods\Benzos_Z_Drugs_ACN_FA_ISP.m	dd-Carryover blank-P2015-2083-1_r001.d	Blank		AM 6.1.1 Benzo and Z by LCQQQ	
P1-E2	P2015-2083-1	D:\MassHunter\methods\Benzos_Z_Drugs_ACN_FA_ISP.m	dd-P2015-2083-1-r001.d	Sample		AM 6.1.1 Benzo and Z by LCQQQ	Blood
P1-E9	Blank - P2015-2092-1	D:\MassHunter\methods\Benzos_Z_Drugs_ACN_FA_ISP.m	dd-Carryover blank-P2015-2092-1_r001.d	Blank		AM 6.1.1 Benzo and Z by LCQQQ	
P1-E1	P2015-2092-1	D:\MassHunter\methods\Benzos_Z_Drugs_ACN_FA_ISP.m	dd-P2015-2092-1-r001.d	Sample		AM 6.1.1 Benzo and Z by LCQQQ	Blood
P1-E9	Blank - P2015-2113-1	D:\MassHunter\methods\Benzos_Z_Drugs_ACN_FA_ISP.m	dd-Carryover blank-P2015-2113-1_r001.d	Blank		AM 6.1.1 Benzo and Z by LCQQQ	
P1-D9	P2015-2113-1	D:\MassHunter\methods\Benzos_Z_Drugs_ACN_FA_ISP.m	dd-P2015-2113-1-r001.d	Sample		AM 6.1.1 Benzo and Z by LCQQQ	Blood
P1-E9	Blank - P2015-2123-1	D:\MassHunter\methods\Benzos_Z_Drugs_ACN_FA_ISP.m	dd-Carryover blank-P2015-2123-1_r001.d	Blank		AM 6.1.1 Benzo and Z by LCQQQ	
P1-D8	P2015-2123-1	D:\MassHunter\methods\Benzos_Z_Drugs_ACN_FA_ISP.m	dd-P2015-2123-1-r001.d	Sample		AM 6.1.1 Benzo and Z by LCQQQ	Blood
P1-E9	Blank - P2015-2161-1	D:\MassHunter\methods\Benzos_Z_Drugs_ACN_FA_ISP.m	dd-Carryover blank-P2015-2161-1_r001.d	Blank		AM 6.1.1 Benzo and Z by LCQQQ	
P1-D7	P2015-2161-1	D:\MassHunter\methods\Benzos_Z_Drugs_ACN_FA_ISP.m	dd-P2015-2161-1-r001.d	Sample		AM 6.1.1 Benzo and Z by LCQQQ	Blood
P1-F9	Blank	D:\MassHunter\methods\Benzos_Z_Drugs_ACN_FA_ISP.m	dd-Carryover blank3_r001.d	Blank		AM 6.1.1 Benzo and Z by LCQQQ	
P2-F9	Blank	D:\MassHunter\methods\Benzos_Z_Drugs_ACN_FA_ISP.m	cs-Blank2-r002.d	Blank		AM 6.1.1 Benzo and Z by LCQQQ	
P2-F8	5 ng/mL	D:\MassHunter\methods\Benzos_Z_Drugs_ACN_FA_ISP.m	cs-5 ng/mL-r001.d	Calibration	1	AM 6.1.1 Benzo and Z by LCQQQ	
P2-F7	10 ng/mL	D:\MassHunter\methods\Benzos_Z_Drugs_ACN_FA_ISP.m	cs-10 ng/mL-r001.d	Calibration	2	AM 6.1.1 Benzo and Z by LCQQQ	
P2-F6	25 ng/mL	D:\MassHunter\methods\Benzos_Z_Drugs_ACN_FA_ISP.m	cs-25 ng/mL_r001.d	Calibration	3	AM 6.1.1 Benzo and Z by LCQQQ	
P2-F5	50 ng/mL	D:\MassHunter\methods\Benzos_Z_Drugs_ACN_FA_ISP.m	cs-50 ng/mL_r001.d	Calibration	4	AM 6.1.1 Benzo and Z by LCQQQ	
P2-F4	100 ng/mL	D:\MassHunter\methods\Benzos_Z_Drugs_ACN_FA_ISP.m	cs-100 ng/mL_r001.d	Calibration	5	AM 6.1.1 Benzo and Z by LCQQQ	
P2-F3	500 ng/mL	D:\MassHunter\methods\Benzos_Z_Drugs_ACN_FA_ISP.m	cs-500 ng/mL_r001.d	Calibration	6	AM 6.1.1 Benzo and Z by LCQQQ	
P2-F2	1000 ng/mL	D:\MassHunter\methods\Benzos_Z_Drugs_ACN_FA_ISP.m	cs-1000 ng/mL_r001.d	Calibration	7	AM 6.1.1 Benzo and Z by LCQQQ	
P2-F1	3000 ng/mL	D:\MassHunter\methods\Benzos_Z_Drugs_ACN_FA_ISP.m	cs-3000 ng/mL_r001.d	Calibration	8	AM 6.1.1 Benzo and Z by LCQQQ	
P2-F9	Blank	D:\MassHunter\methods\Benzos_Z_Drugs_ACN_FA_ISP.m	cs-Carryover blank1_r002.d	Blank		AM 6.1.1 Benzo and Z by LCQQQ	
P2-E9	Negative Blood Control	D:\MassHunter\methods\Benzos_Z_Drugs_ACN_FA_ISP.m	cs-NC-B_r001.d	Sample		AM 6.1.1 Benzo and Z by LCQQQ	UTAK Negative Whole Blood LOT B0689
P2-E8	Positive Blood Control	D:\MassHunter\methods\Benzos_Z_Drugs_ACN_FA_ISP.m	cs-PC-B-BZ-r001.d	Sample		AM 6.1.1 Benzo and Z by LCQQQ	200 ng/mL Benzodiazepines Mix Cerilliant lot FE012413-02 in neg LOT B0130
P2-E9		D:\MassHunter\methods\Benzos_Z_Drugs_ACN_FA_ISP.m		Blank			



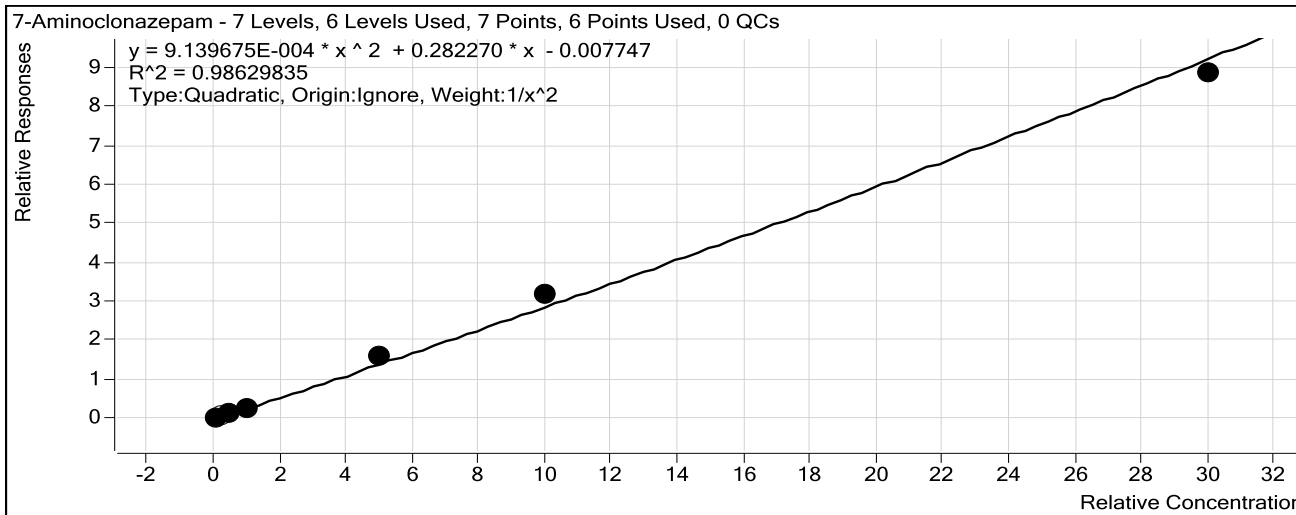
Sample Position	Sample Name	Method	Data File	Sample Type	Level Name	Comment	Info.
	Blank - M2015-3149-1		cs-Carryover blank-M2015-3149-1_r001.d			AM 6.1.1 Benzo and Z by LCQQQ	
P2-E7	M2015-3149-1	D:\MassHunter\methods\Benzos_Z_Drugs_ACN_FA_ISP.m	cs-M2015-3149-1-r001.d	Sample		AM 6.1.1 Benzo and Z by LCQQQ	Blood
P2-E9	Blank - P2015-2088-1	D:\MassHunter\methods\Benzos_Z_Drugs_ACN_FA_ISP.m	cs-Carryover blank-P2015-2088-1_r001.d	Blank		AM 6.1.1 Benzo and Z by LCQQQ	
P2-E6	P2015-2088-1	D:\MassHunter\methods\Benzos_Z_Drugs_ACN_FA_ISP.m	cs-P2015-2088-1-r001.d	Sample		AM 6.1.1 Benzo and Z by LCQQQ	Blood
P2-E9	Blank - P2015-2088-3	D:\MassHunter\methods\Benzos_Z_Drugs_ACN_FA_ISP.m	cs-Carryover blank-P2015-2088-3_r001.d	Blank		AM 6.1.1 Benzo and Z by LCQQQ	
P2-E5	P2015-2088-3	D:\MassHunter\methods\Benzos_Z_Drugs_ACN_FA_ISP.m	cs-P2015-2088-3-r001.d	Sample		AM 6.1.1 Benzo and Z by LCQQQ	Blood
P2-E9	Blank - P2015-2189-1	D:\MassHunter\methods\Benzos_Z_Drugs_ACN_FA_ISP.m	cs-Carryover blank-P2015-2189-1_r001.d	Blank		AM 6.1.1 Benzo and Z by LCQQQ	
P2-E4	P2015-2189-1	D:\MassHunter\methods\Benzos_Z_Drugs_ACN_FA_ISP.m	cs-P2015-2189-1-r001.d	Sample		AM 6.1.1 Benzo and Z by LCQQQ	Blood
P2-E9	Blank - P2015-2191-1	D:\MassHunter\methods\Benzos_Z_Drugs_ACN_FA_ISP.m	cs-Carryover blank-P2015-2191-1_r001.d	Blank		AM 6.1.1 Benzo and Z by LCQQQ	
P2-E3	P2015-2191-1	D:\MassHunter\methods\Benzos_Z_Drugs_ACN_FA_ISP.m	cs-P2015-2191-1-r001.d	Sample		AM 6.1.1 Benzo and Z by LCQQQ	Blood
P2-E9	Blank - P2015-2192-1	D:\MassHunter\methods\Benzos_Z_Drugs_ACN_FA_ISP.m	cs-Carryover blank-P2015-2192-1_r001.d	Blank		AM 6.1.1 Benzo and Z by LCQQQ	
P2-E2	P2015-2192-1	D:\MassHunter\methods\Benzos_Z_Drugs_ACN_FA_ISP.m	cs-P2015-2192-1-r001.d	Sample		AM 6.1.1 Benzo and Z by LCQQQ	Blood
P2-E9	Blank - P2015-2208-1	D:\MassHunter\methods\Benzos_Z_Drugs_ACN_FA_ISP.m	cs-Carryover blank-P2015-2208-1_r001.d	Blank		AM 6.1.1 Benzo and Z by LCQQQ	
P2-E1	P2015-2208-1	D:\MassHunter\methods\Benzos_Z_Drugs_ACN_FA_ISP.m	cs-P2015-2208-1-r001.d	Sample		AM 6.1.1 Benzo and Z by LCQQQ	Blood
P2-E9	Blank - P2015-2209-1	D:\MassHunter\methods\Benzos_Z_Drugs_ACN_FA_ISP.m	cs-Carryover blank-P2015-2209-1_r001.d	Blank		AM 6.1.1 Benzo and Z by LCQQQ	
P2-D9	P2015-2209-1	D:\MassHunter\methods\Benzos_Z_Drugs_ACN_FA_ISP.m	cs-P2015-2209-1-r001.d	Sample		AM 6.1.1 Benzo and Z by LCQQQ	Blood
P2-E9	Blank - P2015-2230-1	D:\MassHunter\methods\Benzos_Z_Drugs_ACN_FA_ISP.m	cs-Carryover blank-P2015-2230-1_r001.d	Blank		AM 6.1.1 Benzo and Z by LCQQQ	
P2-D8	P2015-2230-1	D:\MassHunter\methods\Benzos_Z_Drugs_ACN_FA_ISP.m	cs-P2015-2230-1-r001.d	Sample		AM 6.1.1 Benzo and Z by LCQQQ	Blood
P2-E9	Blank - P2015-2243-1	D:\MassHunter\methods\Benzos_Z_Drugs_ACN_FA_ISP.m	cs-Carryover blank-P2015-2243-1_r001.d	Blank		AM 6.1.1 Benzo and Z by LCQQQ	
P2-D7	P2015-2243-1	D:\MassHunter\methods\Benzos_Z_Drugs_ACN_FA_ISP.m	cs-P2015-2243-1-r001.d	Sample		AM 6.1.1 Benzo and Z by LCQQQ	Blood
P2-E9	Blank - P2015-2247-1	D:\MassHunter\methods\Benzos_Z_Drugs_ACN_FA_ISP.m	cs-Carryover blank-P2015-2247-1_r001.d	Blank		AM 6.1.1 Benzo and Z by LCQQQ	
P2-D6	P2015-2247-1	D:\MassHunter\methods\Benzos_Z_Drugs_ACN_FA_ISP.m	cs-P2015-2247-1-r001.d	Sample		AM 6.1.1 Benzo and Z by LCQQQ	Blood
P2-E9	Blank - P2015-2248-1	D:\MassHunter\methods\Benzos_Z_Drugs_ACN_FA_ISP.m	cs-Carryover blank-P2015-2248-1_r001.d	Blank		AM 6.1.1 Benzo and Z by LCQQQ	
P2-D5	P2015-2248-1	D:\MassHunter\methods\Benzos_Z_Drugs_ACN_FA_ISP.m	cs-P2015-2248-1-r001.d	Sample		AM 6.1.1 Benzo and Z by LCQQQ	Blood
P2-F9	Blank	D:\MassHunter\methods\Benzos_Z_Drugs_ACN_FA_ISP.m	cs-Carryover blank3_r002.d	Blank		AM 6.1.1 Benzo and Z by LCQQQ	

ISP Forensics Calibration Curve Report



Batch Data Path C:\MassHunter\Data\COMBINED\10-30-15\10-30-15 full backup\QuantResults\DD-BZQ-102715.batch.bin
Last Calib Update 11/2/2015 10:42 AM **Analyst Name** ISP TOX

Target Compound 7-Aminoclonazepam
Internal Standard 7-Aminoflunitrazepam-D7 ISTD



Sample	Level	Enabled	Exp Conc	Final Conc	Accuracy
10 ng/mL	2	<input checked="" type="checkbox"/>	10	10.4	103.6
25 ng/mL	3	<input type="checkbox"/> *	25	28.2	112.8
50 ng/mL	4	<input checked="" type="checkbox"/>	50	40.7	81.4
100 ng/mL	5	<input checked="" type="checkbox"/>	100	97.9	97.9
500 ng/mL	6	<input checked="" type="checkbox"/>	500	557.5	111.5
1000 ng/mL	7	<input checked="" type="checkbox"/>	1000	1097.1	109.7
3000 ng/mL	8	<input checked="" type="checkbox"/>	3000	2872.2	95.7

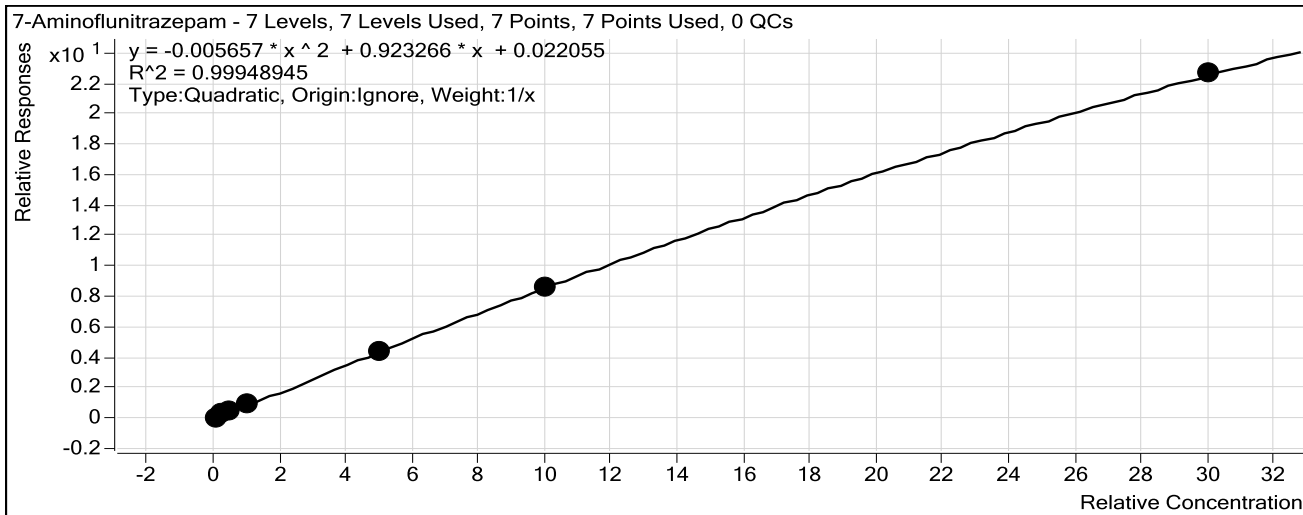
*Retention time for the 25 ng/mL 7-Aminoclonazepam outside tolerance. This compound may be reported as "inconclusive down to the 10ng/mL cutoff, but the administrative cutoff for confirming this compound in this batch is 50 ng/mL.

ISP Forensics Calibration Curve Report



Batch Data Path C:\MassHunter\Data\COMBINED\10-30-15\10-30-15 full backup\QuantResults\DD-BZQ-102715.batch.bin
Last Calib Update 11/2/2015 10:42 AM **Analyst Name** ISP TOX

Target Compound 7-Aminoflunitrazepam
Internal Standard 7-Aminoflunitrazepam-D7 ISTD



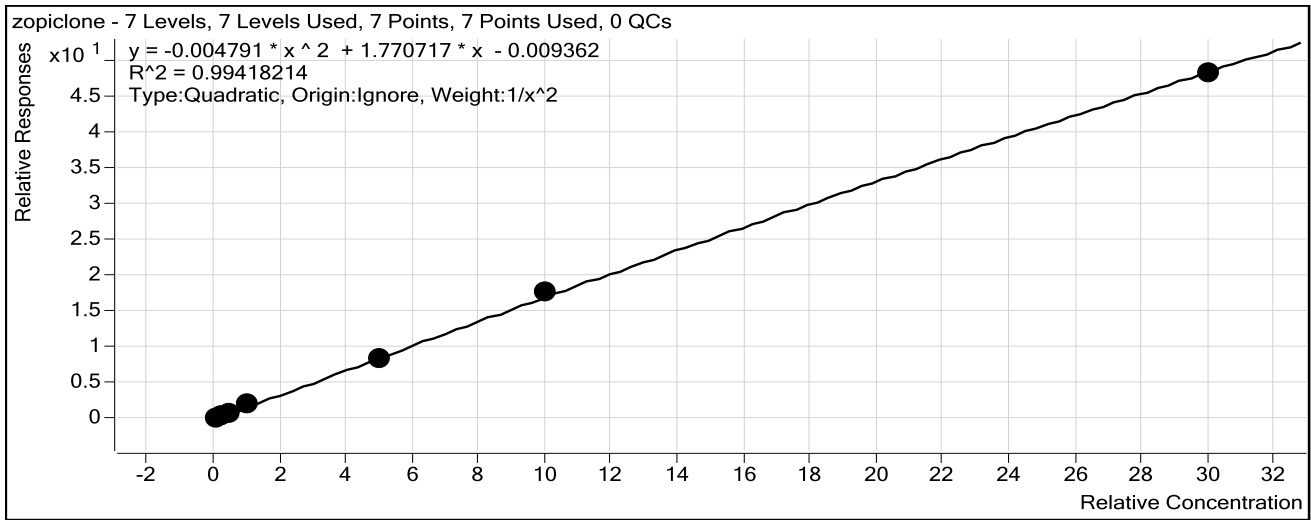
Sample	Level	Enabled	Exp Conc	Final Conc	Accuracy
10 ng/mL	2	<input checked="" type="checkbox"/>	10	8.6	85.5
25 ng/mL	3	<input checked="" type="checkbox"/>	25	28.9	115.7
50 ng/mL	4	<input checked="" type="checkbox"/>	50	46.4	92.7
100 ng/mL	5	<input checked="" type="checkbox"/>	100	107.4	107.4
500 ng/mL	6	<input checked="" type="checkbox"/>	500	494.5	98.9
1000 ng/mL	7	<input checked="" type="checkbox"/>	1000	997.2	99.7
3000 ng/mL	8	<input checked="" type="checkbox"/>	3000	3002.3	100.1

ISP Forensics Calibration Curve Report



Batch Data Path C:\MassHunter\Data\COMBINED\10-30-15\10-30-15 full backup\QuantResults\DD-BZQ-102715.batch.bin
Last Calib Update 11/2/2015 10:42 AM **Analyst Name** ISP TOX

Target Compound zopiclone
Internal Standard Oxazepam D5 ISTD



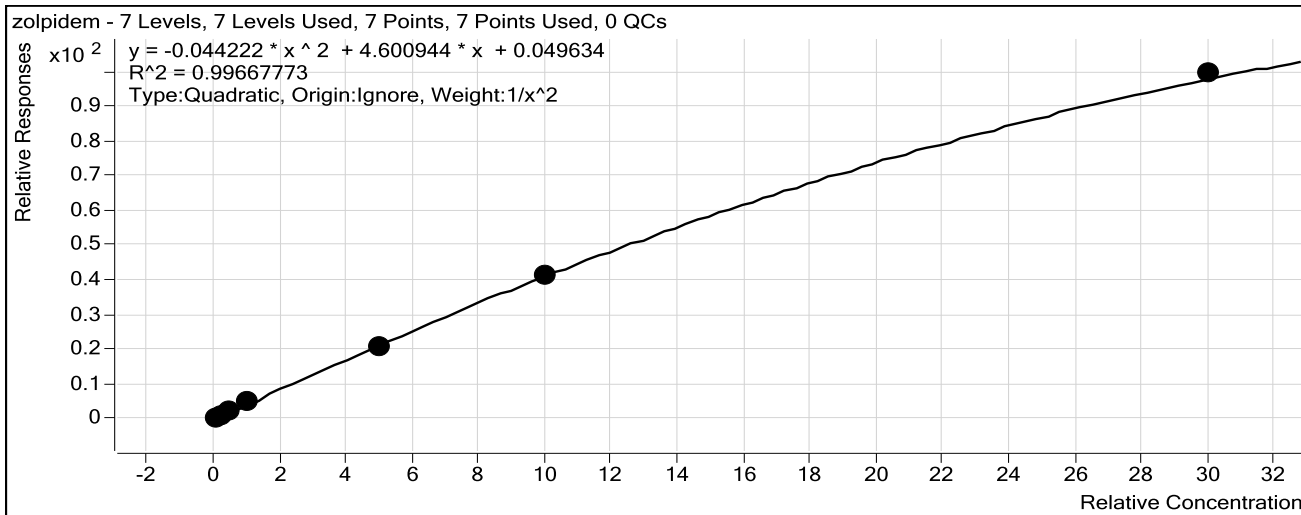
Sample	Level	Enabled	Exp Conc	Final Conc	Accuracy
10 ng/mL	2	<input checked="" type="checkbox"/>	10	10.4	104.0
25 ng/mL	3	<input checked="" type="checkbox"/>	25	22.3	89.4
50 ng/mL	4	<input checked="" type="checkbox"/>	50	48.3	96.7
100 ng/mL	5	<input checked="" type="checkbox"/>	100	109.8	109.8
500 ng/mL	6	<input checked="" type="checkbox"/>	500	489.3	97.9
1000 ng/mL	7	<input checked="" type="checkbox"/>	1000	1034.9	103.5
3000 ng/mL	8	<input checked="" type="checkbox"/>	3000	2966.2	98.9

ISP Forensics Calibration Curve Report



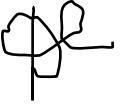
Batch Data Path C:\MassHunter\Data\COMBINED\10-30-15\10-30-15 full backup\QuantResults\DD-BZQ-102715.batch.bin
Last Calib Update 11/2/2015 10:42 AM **Analyst Name** ISP TOX

Target Compound zolpidem
Internal Standard Oxazepam D5 ISTD



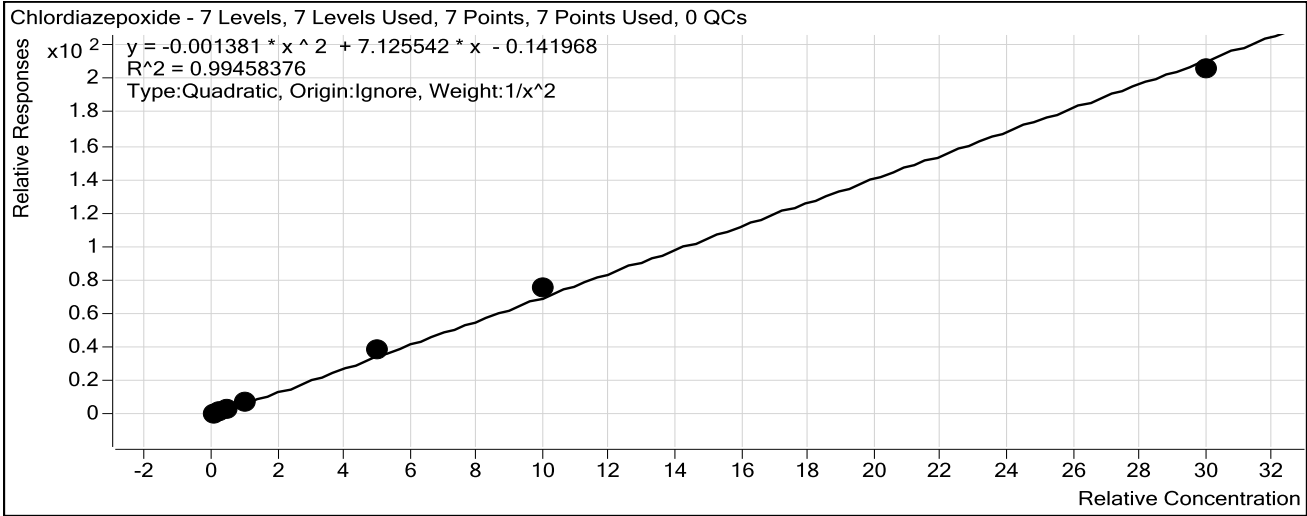
Sample	Level	Enabled	Exp Conc	Final Conc	Accuracy
10 ng/mL	2	<input checked="" type="checkbox"/>	10	10.0	100.3
25 ng/mL	3	<input checked="" type="checkbox"/>	25	24.6	98.2
50 ng/mL	4	<input checked="" type="checkbox"/>	50	49.0	98.0
100 ng/mL	5	<input checked="" type="checkbox"/>	100	109.1	109.1
500 ng/mL	6	<input checked="" type="checkbox"/>	500	466.2	93.2
1000 ng/mL	7	<input checked="" type="checkbox"/>	1000	998.1	99.8
3000 ng/mL	8	<input checked="" type="checkbox"/>	3000	3059.2	102.0

ISP Forensics Calibration Curve Report



Batch Data Path C:\MassHunter\Data\COMBINED\10-30-15\10-30-15 full backup\QuantResults\DD-BZQ-102715.batch.bin
Last Calib Update 11/2/2015 10:42 AM **Analyst Name** ISP TOX

Target Compound *Chlordiazepoxide*
Internal Standard *Nordiazepam-D5 ISTD*



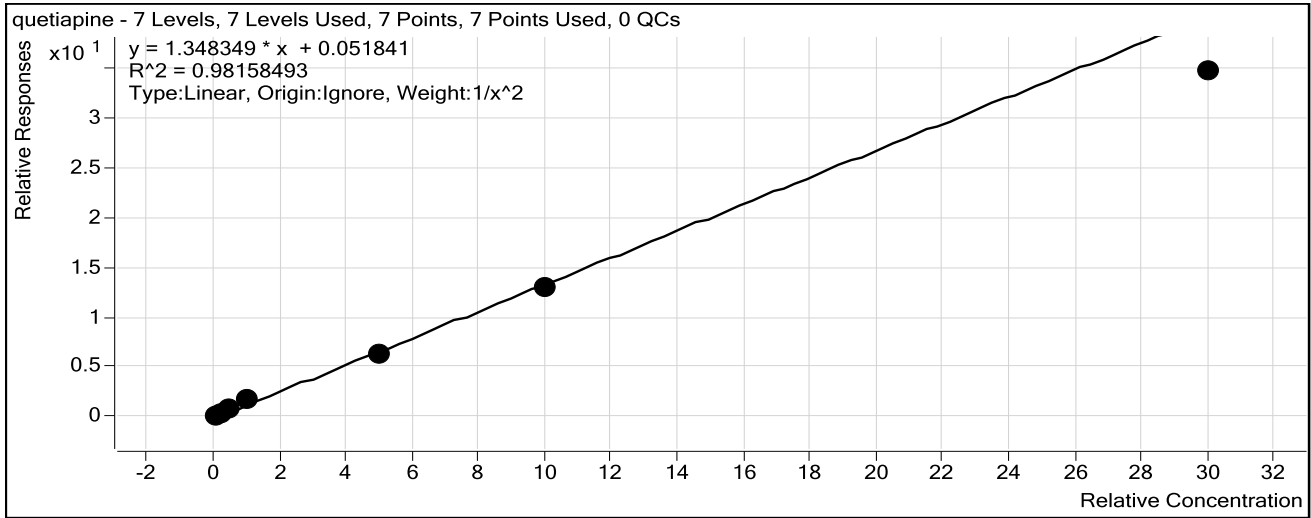
Sample	Level	Enabled	Exp Conc	Final Conc	Accuracy
10 ng/mL	2	<input checked="" type="checkbox"/>	10	10.2	102.5
25 ng/mL	3	<input checked="" type="checkbox"/>	25	24.8	99.1
50 ng/mL	4	<input checked="" type="checkbox"/>	50	44.7	89.4
100 ng/mL	5	<input checked="" type="checkbox"/>	100	97.5	97.5
500 ng/mL	6	<input checked="" type="checkbox"/>	500	544.4	108.9
1000 ng/mL	7	<input checked="" type="checkbox"/>	1000	1057.0	105.7
3000 ng/mL	8	<input checked="" type="checkbox"/>	3000	2905.6	96.9

ISP Forensics Calibration Curve Report



Batch Data Path C:\MassHunter\Data\COMBINED\10-30-15\10-30-15 full backup\QuantResults\DD-BZQ-102715.batch.bin
Last Calib Update 11/2/2015 10:42 AM **Analyst Name** ISP TOX

Target Compound *quetiapine*
Internal Standard *Oxazepam D5 ISTD*



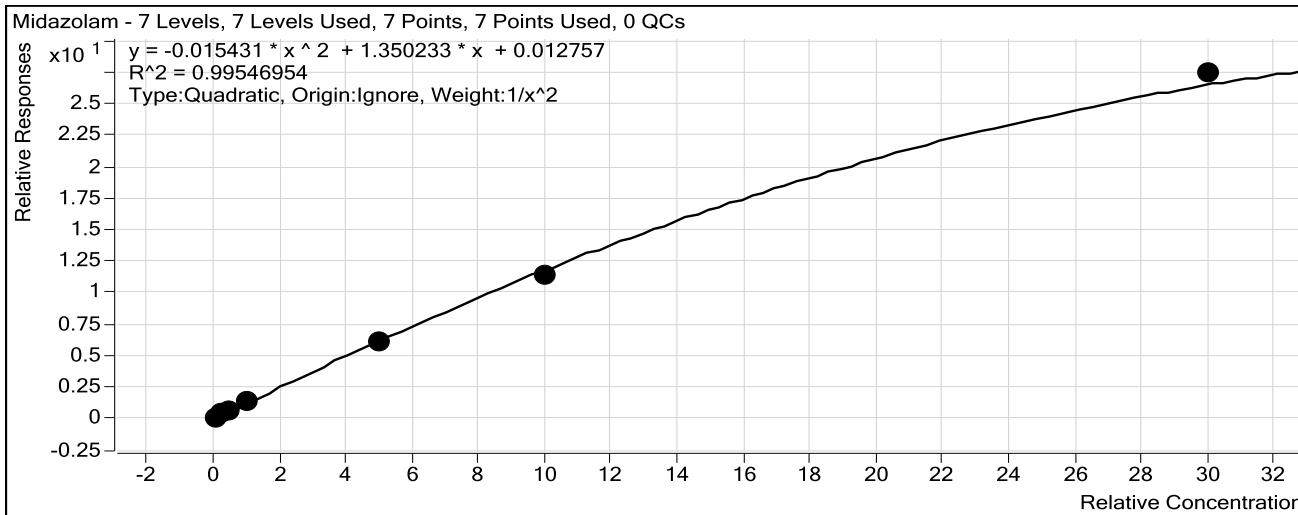
Sample	Level	Enabled	Exp Conc	Final Conc	Accuracy
10 ng/mL	2	<input checked="" type="checkbox"/>	10	9.2	92.5
25 ng/mL	3	<input checked="" type="checkbox"/>	25	28.3	113.3
50 ng/mL	4	<input checked="" type="checkbox"/>	50	51.8	103.6
100 ng/mL	5	<input checked="" type="checkbox"/>	100	117.4	117.4
500 ng/mL	6	<input checked="" type="checkbox"/>	500	455.4	91.1
1000 ng/mL	7	<input checked="" type="checkbox"/>	1000	964.6	96.5
3000 ng/mL	8	<input checked="" type="checkbox"/>	3000	2569.5	85.6

ISP Forensics Calibration Curve Report



Batch Data Path C:\MassHunter\Data\COMBINED\10-30-15\10-30-15 full backup\QuantResults\DD-BZQ-102715.batch.bin
Last Calib Update 11/2/2015 10:42 AM **Analyst Name** ISP TOX

Target Compound Midazolam
Internal Standard Clonazepam-D4 ISTD



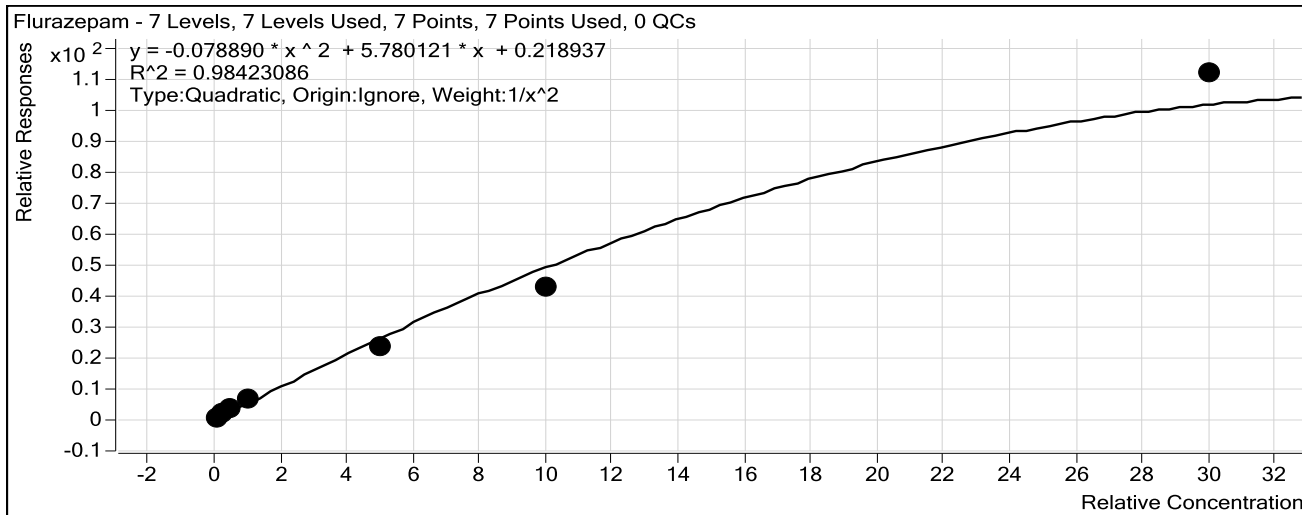
Sample	Level	Enabled	Exp Conc	Final Conc	Accuracy
10 ng/mL	2	<input checked="" type="checkbox"/>	10	9.9	98.8
25 ng/mL	3	<input checked="" type="checkbox"/>	25	25.8	103.2
50 ng/mL	4	<input checked="" type="checkbox"/>	50	47.8	95.6
100 ng/mL	5	<input checked="" type="checkbox"/>	100	109.7	109.7
500 ng/mL	6	<input checked="" type="checkbox"/>	500	472.1	94.4
1000 ng/mL	7	<input checked="" type="checkbox"/>	1000	948.1	94.8
3000 ng/mL	8	<input checked="" type="checkbox"/>	3000	3195.9	106.5

ISP Forensics Calibration Curve Report



Batch Data Path C:\MassHunter\Data\COMBINED\10-30-15\10-30-15 full backup\QuantResults\DD-BZQ-102715.batch.bin
Last Calib Update 11/2/2015 10:42 AM **Analyst Name** ISP TOX

Target Compound Flurazepam
Internal Standard Diazepam-D5 ISTD



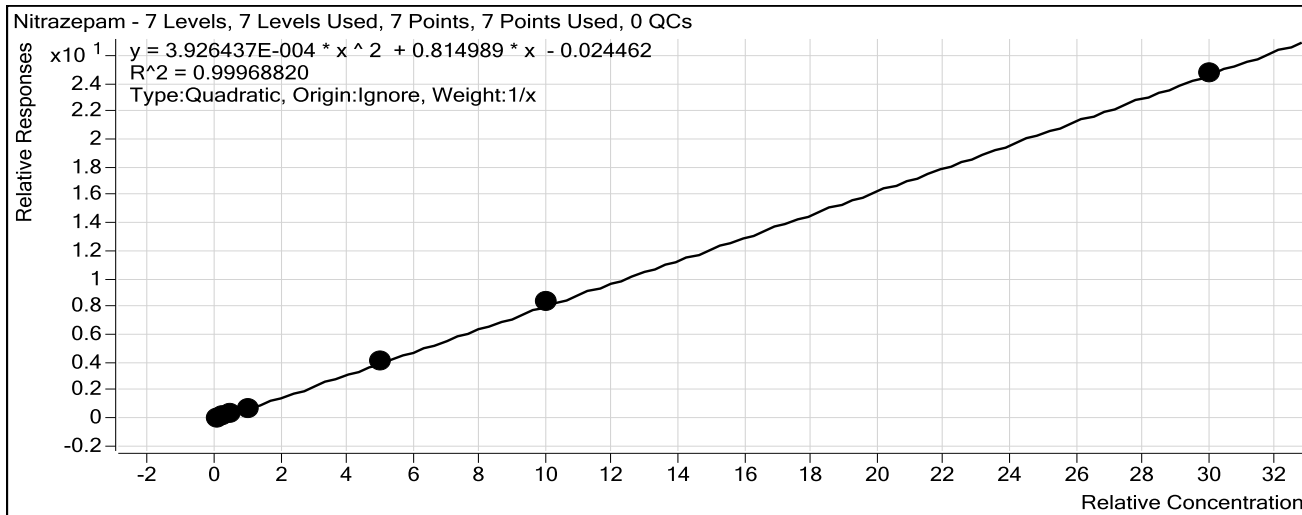
Sample	Level	Enabled	Exp Conc	Final Conc	Accuracy
10 ng/mL	2	<input checked="" type="checkbox"/>	10	9.5	95.5
25 ng/mL	3	<input checked="" type="checkbox"/>	25	26.8	107.3
50 ng/mL	4	<input checked="" type="checkbox"/>	50	51.9	103.8
100 ng/mL	5	<input checked="" type="checkbox"/>	100	112.4	112.4
500 ng/mL	6	<input checked="" type="checkbox"/>	500	431.7	86.3
1000 ng/mL	7	<input checked="" type="checkbox"/>	1000	837.6	83.8
3000 ng/mL	8	<input checked="" type="checkbox"/>	3000	0.0	0.0

ISP Forensics Calibration Curve Report



Batch Data Path C:\MassHunter\Data\COMBINED\10-30-15\10-30-15 full backup\QuantResults\DD-BZQ-102715.batch.bin
Last Calib Update 11/2/2015 10:42 AM **Analyst Name** ISP TOX

Target Compound Nitrazepam
Internal Standard Clonazepam-D4 ISTD



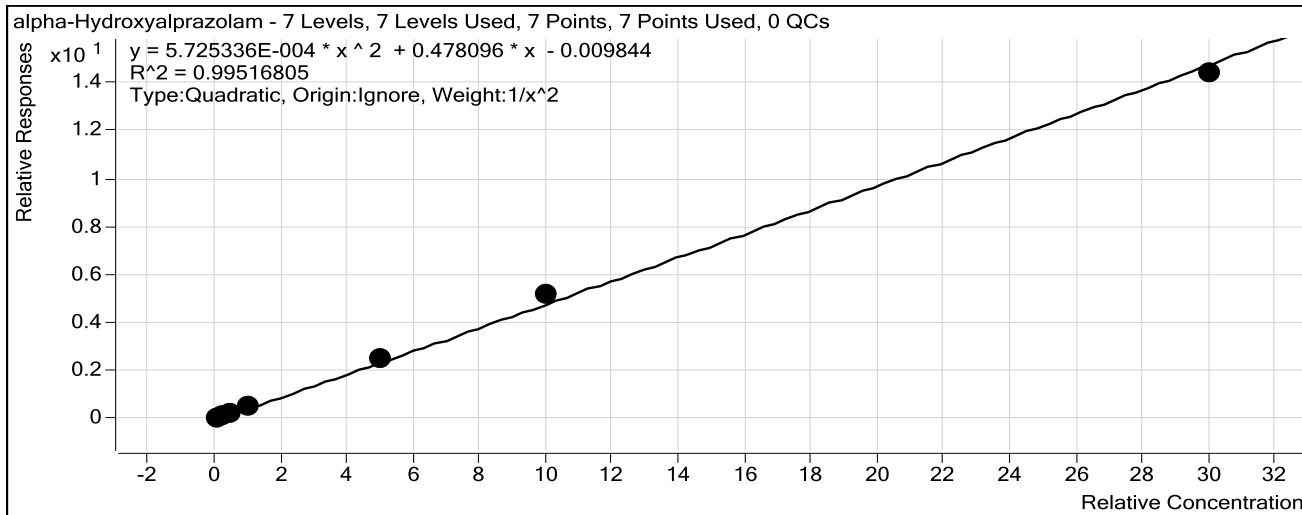
Sample	Level	Enabled	Exp Conc	Final Conc	Accuracy
10 ng/mL	2	<input checked="" type="checkbox"/>	10	11.3	113.2
25 ng/mL	3	<input checked="" type="checkbox"/>	25	25.5	102.0
50 ng/mL	4	<input checked="" type="checkbox"/>	50	43.8	87.7
100 ng/mL	5	<input checked="" type="checkbox"/>	100	96.5	96.5
500 ng/mL	6	<input checked="" type="checkbox"/>	500	495.5	99.1
1000 ng/mL	7	<input checked="" type="checkbox"/>	1000	1016.9	101.7
3000 ng/mL	8	<input checked="" type="checkbox"/>	3000	2995.4	99.8

ISP Forensics Calibration Curve Report



Batch Data Path C:\MassHunter\Data\COMBINED\10-30-15\10-30-15 full backup\QuantResults\DD-BZQ-102715.batch.bin
Last Calib Update 11/2/2015 10:42 AM **Analyst Name** ISP TOX

Target Compound *alpha-Hydroxyalprazolam*
Internal Standard *alphahydroxyalprazolam-D5 ISTD*



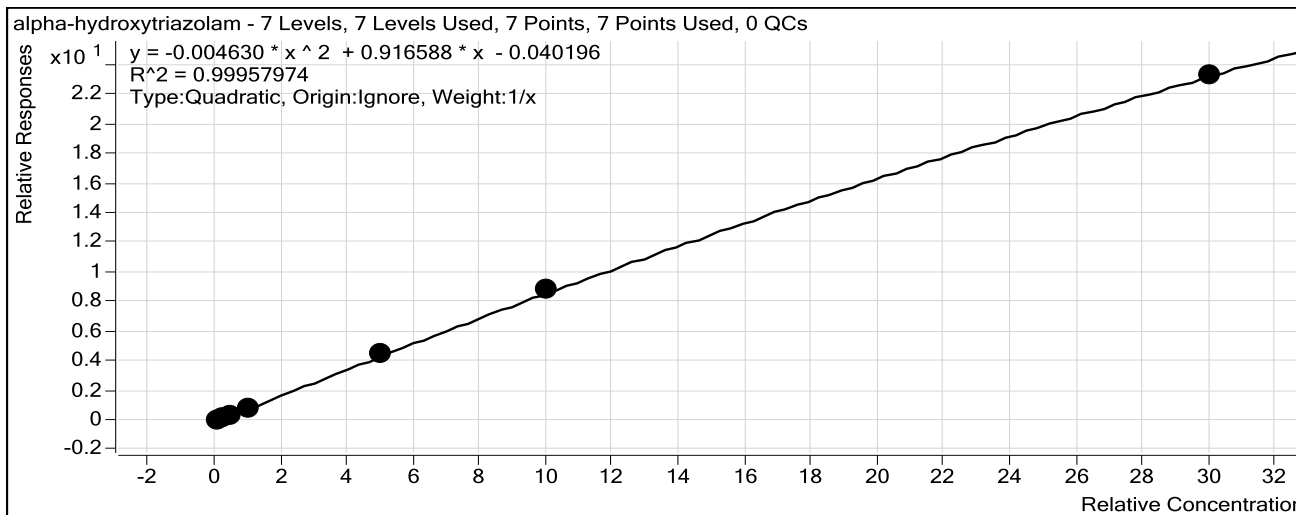
Sample	Level	Enabled	Exp Conc	Final Conc	Accuracy
10 ng/mL	2	<input checked="" type="checkbox"/>	10	10.3	103.0
25 ng/mL	3	<input checked="" type="checkbox"/>	25	24.3	97.2
50 ng/mL	4	<input checked="" type="checkbox"/>	50	44.6	89.3
100 ng/mL	5	<input checked="" type="checkbox"/>	100	101.4	101.4
500 ng/mL	6	<input checked="" type="checkbox"/>	500	523.8	104.8
1000 ng/mL	7	<input checked="" type="checkbox"/>	1000	1073.6	107.4
3000 ng/mL	8	<input checked="" type="checkbox"/>	3000	2911.1	97.0

ISP Forensics Calibration Curve Report



Batch Data Path C:\MassHunter\Data\COMBINED\10-30-15\10-30-15 full backup\QuantResults\DD-BZQ-102715.batch.bin
Last Calib Update 11/2/2015 10:42 AM **Analyst Name** ISP TOX

Target Compound *alpha-hydroxytriazolam*
Internal Standard *Nordiazepam-D5 ISTD*



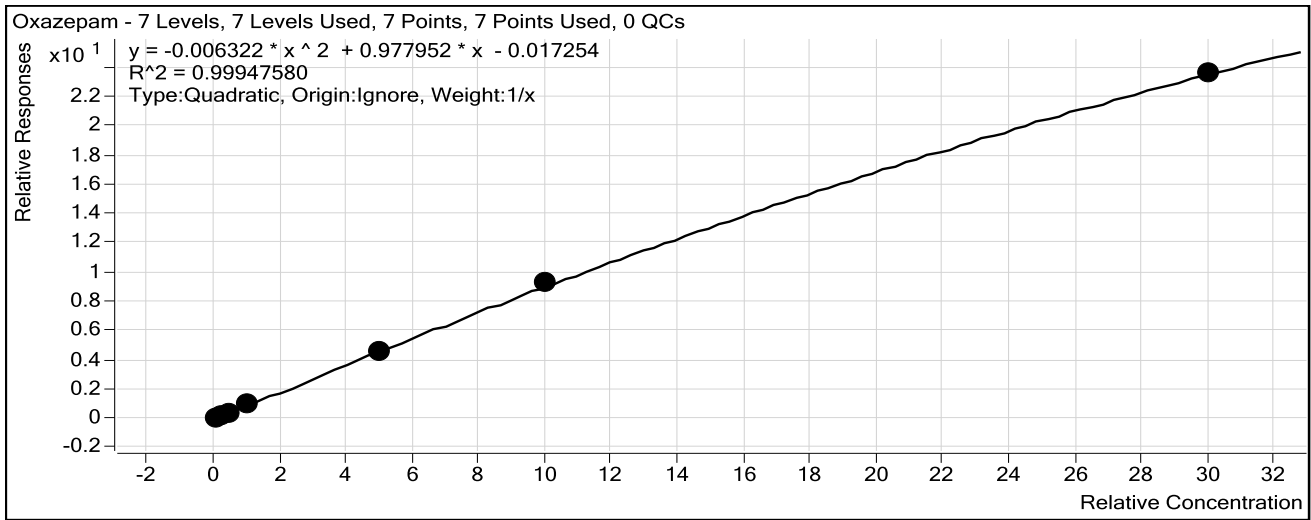
Sample	Level	Enabled	Exp Conc	Final Conc	Accuracy
10 ng/mL	2	<input checked="" type="checkbox"/>	10	11.0	110.5
25 ng/mL	3	<input checked="" type="checkbox"/>	25	26.4	105.7
50 ng/mL	4	<input checked="" type="checkbox"/>	50	45.1	90.1
100 ng/mL	5	<input checked="" type="checkbox"/>	100	92.0	92.0
500 ng/mL	6	<input checked="" type="checkbox"/>	500	502.9	100.6
1000 ng/mL	7	<input checked="" type="checkbox"/>	1000	1012.9	101.3
3000 ng/mL	8	<input checked="" type="checkbox"/>	3000	2994.3	99.8

ISP Forensics Calibration Curve Report



Batch Data Path C:\MassHunter\Data\COMBINED\10-30-15\10-30-15 full backup\QuantResults\DD-BZQ-102715.batch.bin
Last Calib Update 11/2/2015 10:42 AM **Analyst Name** ISP TOX

Target Compound Oxazepam
Internal Standard Oxazepam D5 ISTD



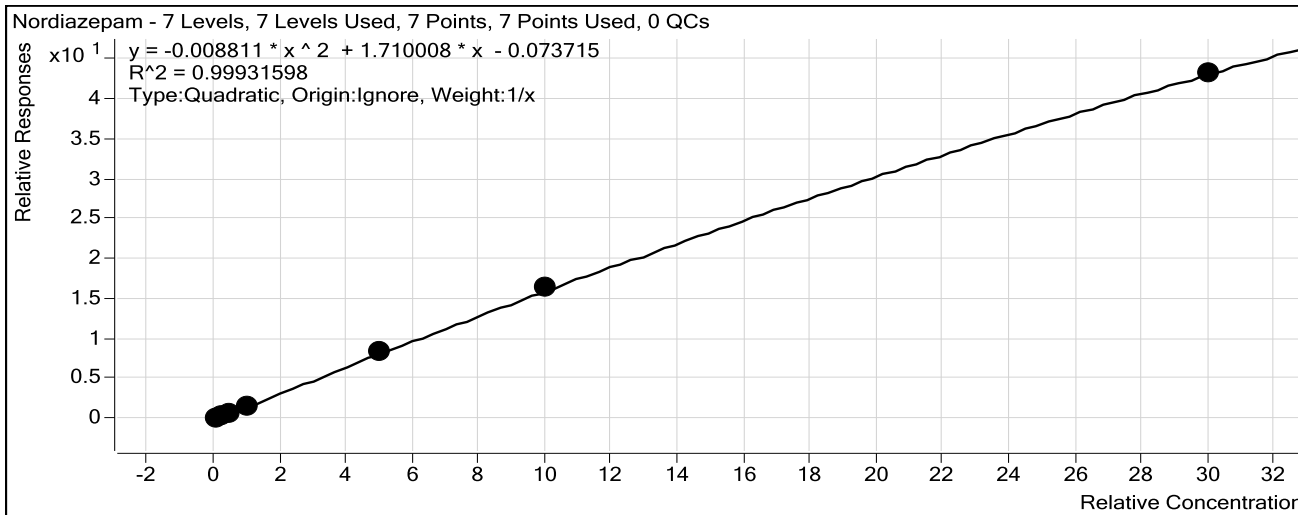
Sample	Level	Enabled	Exp Conc	Final Conc	Accuracy
10 ng/mL	2	<input checked="" type="checkbox"/>	10	11.3	112.6
25 ng/mL	3	<input checked="" type="checkbox"/>	25	24.5	97.9
50 ng/mL	4	<input checked="" type="checkbox"/>	50	44.7	89.4
100 ng/mL	5	<input checked="" type="checkbox"/>	100	100.8	100.8
500 ng/mL	6	<input checked="" type="checkbox"/>	500	484.9	97.0
1000 ng/mL	7	<input checked="" type="checkbox"/>	1000	1026.8	102.7
3000 ng/mL	8	<input checked="" type="checkbox"/>	3000	2991.3	99.7

ISP Forensics Calibration Curve Report



Batch Data Path C:\MassHunter\Data\COMBINED\10-30-15\10-30-15 full backup\QuantResults\DD-BZQ-102715.batch.bin
Last Calib Update 11/2/2015 10:42 AM **Analyst Name** ISP TOX

Target Compound Nordiazepam
Internal Standard Nordiazepam-D5 ISTD



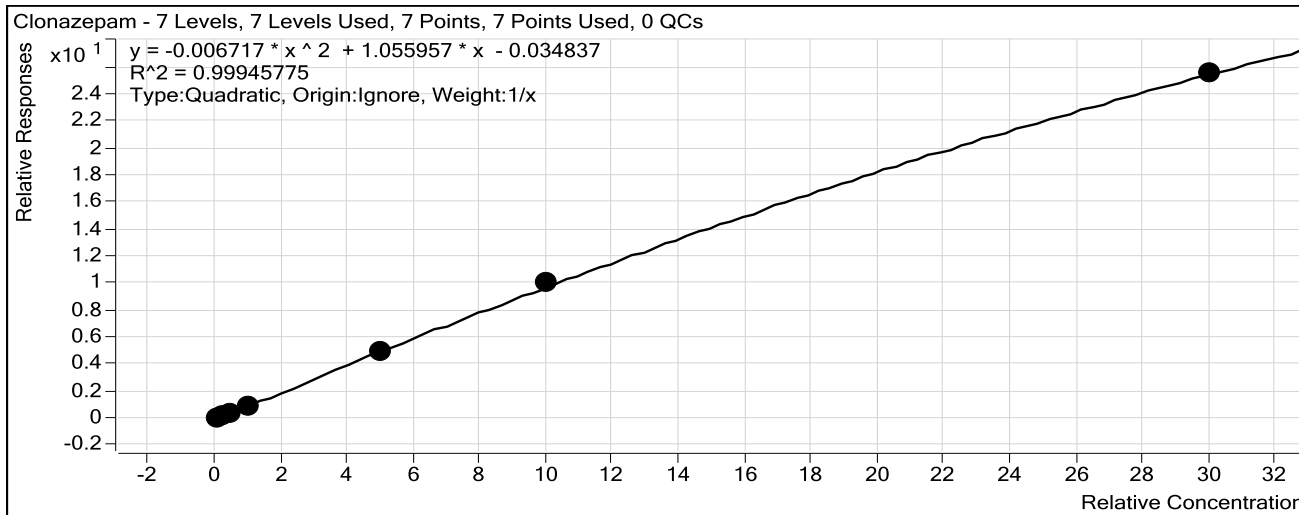
Sample	Level	Enabled	Exp Conc	Final Conc	Accuracy
10 ng/mL	2	<input checked="" type="checkbox"/>	10	11.9	119.1
25 ng/mL	3	<input checked="" type="checkbox"/>	25	25.5	101.9
50 ng/mL	4	<input checked="" type="checkbox"/>	50	41.7	83.4
100 ng/mL	5	<input checked="" type="checkbox"/>	100	93.5	93.5
500 ng/mL	6	<input checked="" type="checkbox"/>	500	504.7	100.9
1000 ng/mL	7	<input checked="" type="checkbox"/>	1000	1013.8	101.4
3000 ng/mL	8	<input checked="" type="checkbox"/>	3000	2993.4	99.8

ISP Forensics Calibration Curve Report



Batch Data Path C:\MassHunter\Data\COMBINED\10-30-15\10-30-15 full backup\QuantResults\DD-BZQ-102715.batch.bin
Last Calib Update 11/2/2015 10:42 AM **Analyst Name** ISP TOX

Target Compound Clonazepam
Internal Standard Clonazepam-D4 ISTD



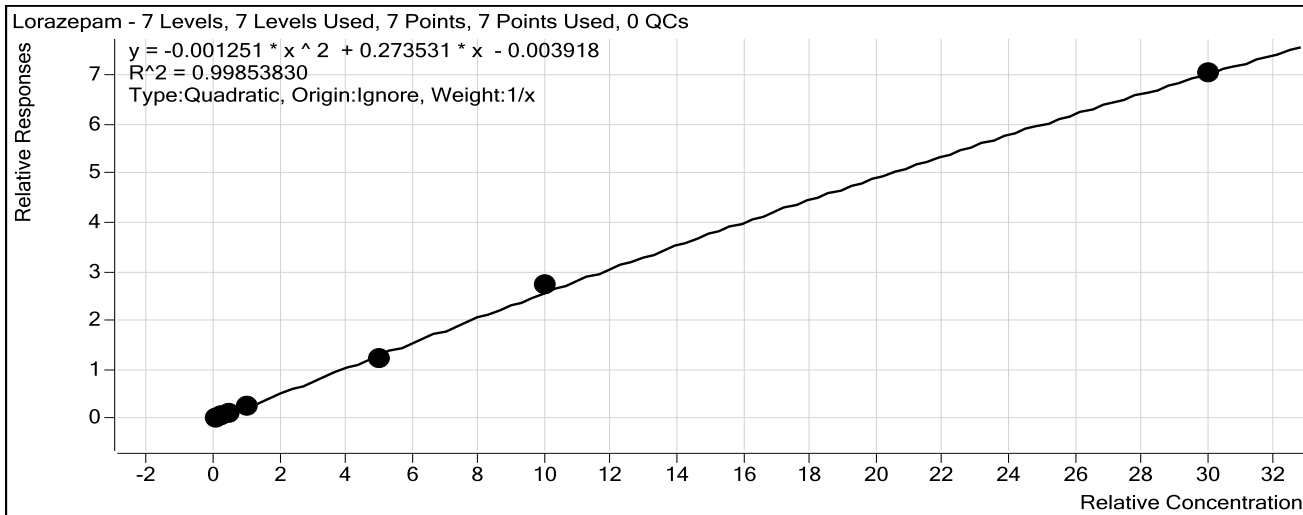
Sample	Level	Enabled	Exp Conc	Final Conc	Accuracy
10 ng/mL	2	<input checked="" type="checkbox"/>	10	11.6	116.1
25 ng/mL	3	<input checked="" type="checkbox"/>	25	24.3	97.3
50 ng/mL	4	<input checked="" type="checkbox"/>	50	44.9	89.7
100 ng/mL	5	<input checked="" type="checkbox"/>	100	96.7	96.7
500 ng/mL	6	<input checked="" type="checkbox"/>	500	488.4	97.7
1000 ng/mL	7	<input checked="" type="checkbox"/>	1000	1028.1	102.8
3000 ng/mL	8	<input checked="" type="checkbox"/>	3000	2990.1	99.7

ISP Forensics Calibration Curve Report



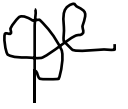
Batch Data Path C:\MassHunter\Data\COMBINED\10-30-15\10-30-15 full backup\QuantResults\DD-BZQ-102715.batch.bin
Last Calib Update 11/2/2015 10:42 AM **Analyst Name** ISP TOX

Target Compound Lorazepam
Internal Standard Oxazepam D5 ISTD



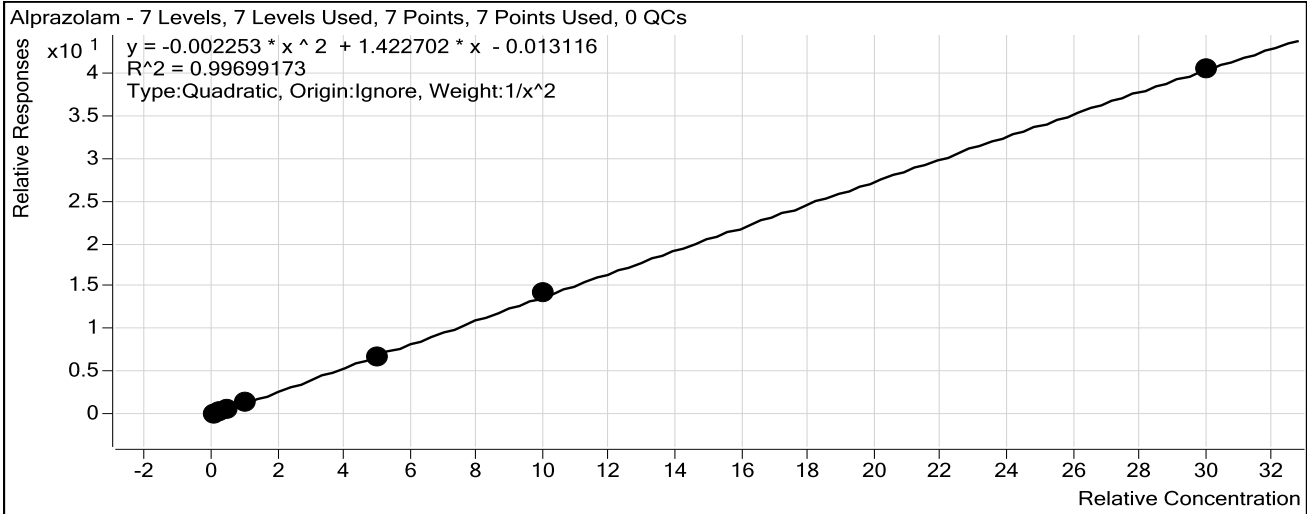
Sample	Level	Enabled	Exp Conc	Final Conc	Accuracy
10 ng/mL	2	<input checked="" type="checkbox"/>	10	11.2	111.5
25 ng/mL	3	<input checked="" type="checkbox"/>	25	25.9	103.6
50 ng/mL	4	<input checked="" type="checkbox"/>	50	45.3	90.7
100 ng/mL	5	<input checked="" type="checkbox"/>	100	95.9	95.9
500 ng/mL	6	<input checked="" type="checkbox"/>	500	467.1	93.4
1000 ng/mL	7	<input checked="" type="checkbox"/>	1000	1054.1	105.4
3000 ng/mL	8	<input checked="" type="checkbox"/>	3000	2985.0	99.5

ISP Forensics Calibration Curve Report



Batch Data Path C:\MassHunter\Data\COMBINED\10-30-15\10-30-15 full backup\QuantResults\DD-BZQ-102715.batch.bin
Last Calib Update 11/2/2015 10:42 AM **Analyst Name** ISP TOX

Target Compound Alprazolam
Internal Standard alphahydroxyalprazolam-D5 ISTD



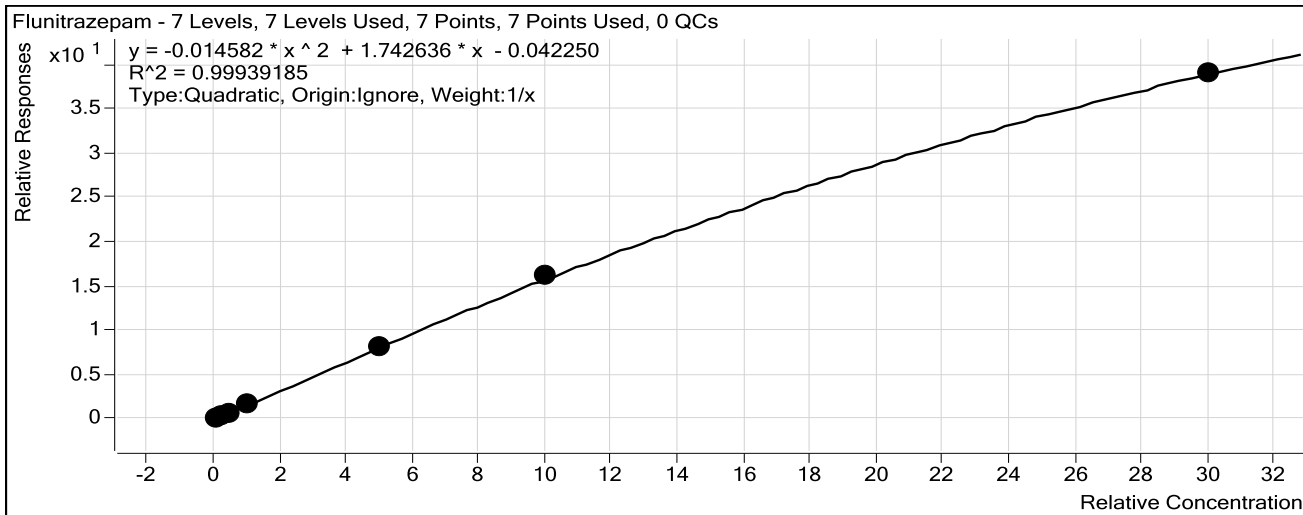
Sample	Level	Enabled	Exp Conc	Final Conc	Accuracy
10 ng/mL	2	<input checked="" type="checkbox"/>	10	10.1	101.0
25 ng/mL	3	<input checked="" type="checkbox"/>	25	24.8	99.0
50 ng/mL	4	<input checked="" type="checkbox"/>	50	46.5	93.1
100 ng/mL	5	<input checked="" type="checkbox"/>	100	108.1	108.1
500 ng/mL	6	<input checked="" type="checkbox"/>	500	483.4	96.7
1000 ng/mL	7	<input checked="" type="checkbox"/>	1000	1026.7	102.7
3000 ng/mL	8	<input checked="" type="checkbox"/>	3000	2984.6	99.5

ISP Forensics Calibration Curve Report



Batch Data Path C:\MassHunter\Data\COMBINED\10-30-15\10-30-15 full backup\QuantResults\DD-BZQ-102715.batch.bin
Last Calib Update 11/2/2015 10:42 AM **Analyst Name** ISP TOX

Target Compound Flunitrazepam
Internal Standard Clonazepam-D4 ISTD



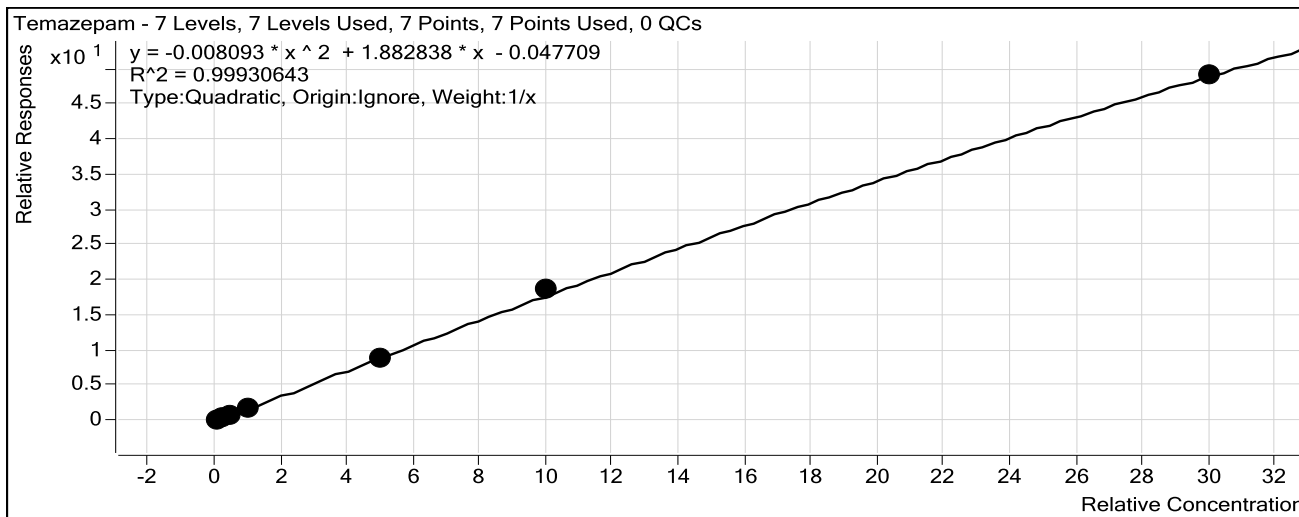
Sample	Level	Enabled	Exp Conc	Final Conc	Accuracy
10 ng/mL	2	<input checked="" type="checkbox"/>	10	11.6	115.9
25 ng/mL	3	<input checked="" type="checkbox"/>	25	24.3	97.1
50 ng/mL	4	<input checked="" type="checkbox"/>	50	43.9	87.8
100 ng/mL	5	<input checked="" type="checkbox"/>	100	99.3	99.3
500 ng/mL	6	<input checked="" type="checkbox"/>	500	487.8	97.6
1000 ng/mL	7	<input checked="" type="checkbox"/>	1000	1027.2	102.7
3000 ng/mL	8	<input checked="" type="checkbox"/>	3000	2988.9	99.6

ISP Forensics Calibration Curve Report



Batch Data Path C:\MassHunter\Data\COMBINED\10-30-15\10-30-15 full backup\QuantResults\DD-BZQ-102715.batch.bin
Last Calib Update 11/2/2015 10:42 AM **Analyst Name** ISP TOX

Target Compound *Temazepam*
Internal Standard *Oxazepam D5 ISTD*



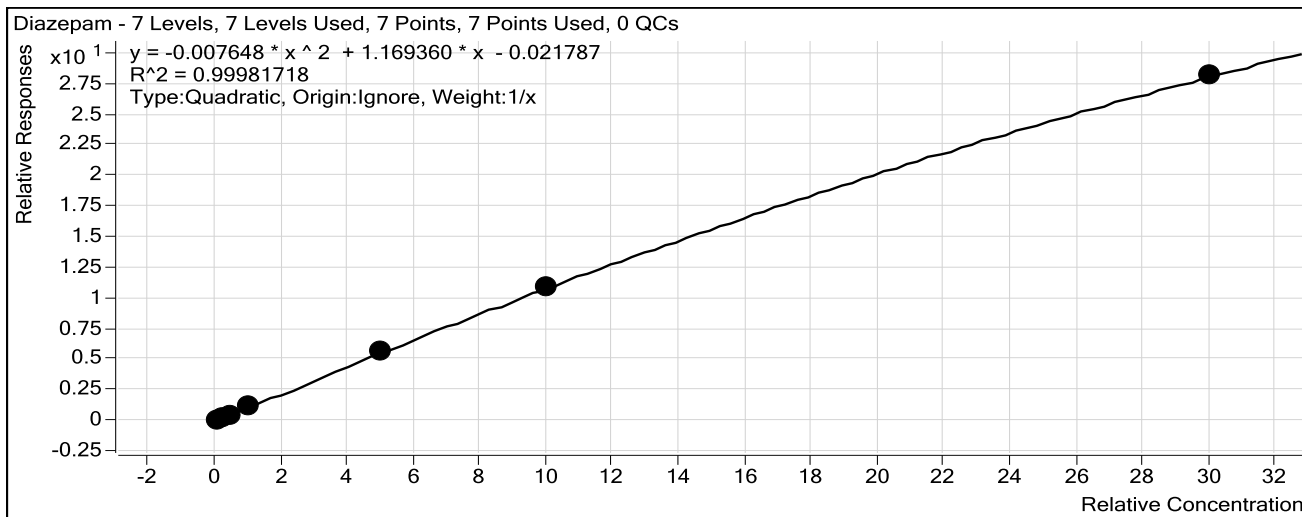
Sample	Level	Enabled	Exp Conc	Final Conc	Accuracy
10 ng/mL	2	<input checked="" type="checkbox"/>	10	11.7	116.6
25 ng/mL	3	<input checked="" type="checkbox"/>	25	24.1	96.3
50 ng/mL	4	<input checked="" type="checkbox"/>	50	44.8	89.5
100 ng/mL	5	<input checked="" type="checkbox"/>	100	98.3	98.3
500 ng/mL	6	<input checked="" type="checkbox"/>	500	481.6	96.3
1000 ng/mL	7	<input checked="" type="checkbox"/>	1000	1034.1	103.4
3000 ng/mL	8	<input checked="" type="checkbox"/>	3000	2990.2	99.7

ISP Forensics Calibration Curve Report



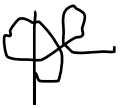
Batch Data Path C:\MassHunter\Data\COMBINED\10-30-15\10-30-15 full backup\QuantResults\DD-BZQ-102715.batch.bin
Last Calib Update 11/2/2015 10:42 AM **Analyst Name** ISP TOX

Target Compound *Diazepam*
Internal Standard *Diazepam-D5 ISTD*



Sample	Level	Enabled	Exp Conc	Final Conc	Accuracy
10 ng/mL	2	<input checked="" type="checkbox"/>	10	11.1	110.9
25 ng/mL	3	<input checked="" type="checkbox"/>	25	24.4	97.7
50 ng/mL	4	<input checked="" type="checkbox"/>	50	45.4	90.8
100 ng/mL	5	<input checked="" type="checkbox"/>	100	100.0	100.0
500 ng/mL	6	<input checked="" type="checkbox"/>	500	500.2	100.0
1000 ng/mL	7	<input checked="" type="checkbox"/>	1000	1006.6	100.7
3000 ng/mL	8	<input checked="" type="checkbox"/>	3000	2996.9	99.9

ISP FORENSICS
Pocatello
Benzodiazepine Analysis Report

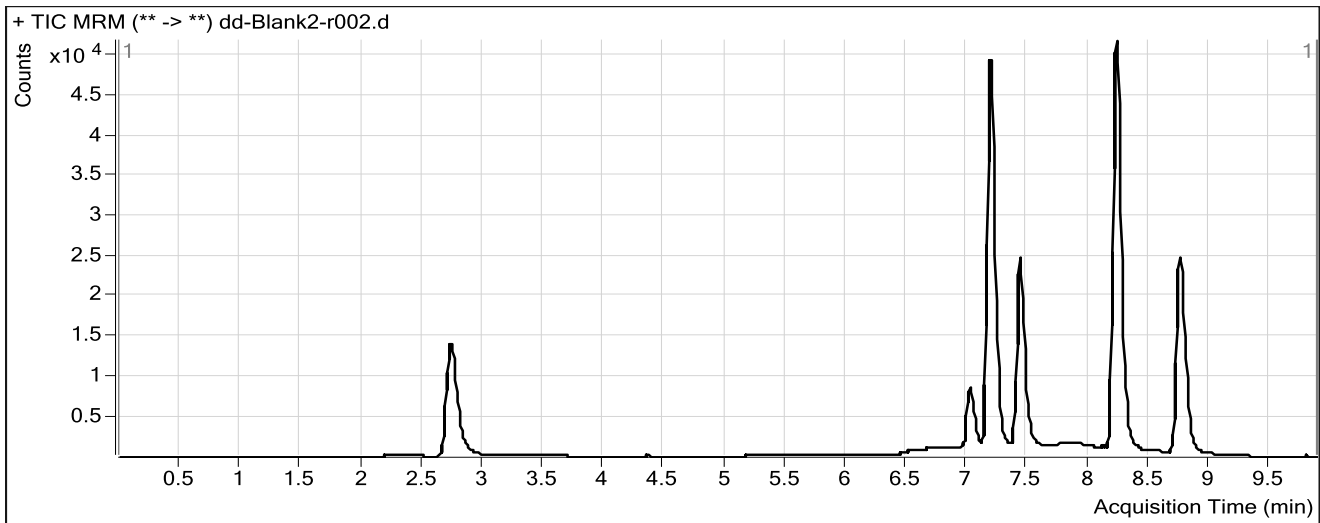


Batch Data Path	C:\MassHunter\Data\COMBINED\10-30-15\10-30-15 full backup\QuantResults\DD-BZQ-102715.ba		
Analysis Time	11/2/2015 10:42 AM	Analyst Name	ISPUser
Report Time	11/2/2015 11:16 AM	Reporter Name	ISPUser
Last Calib Update	11/2/2015 10:42 AM	Batch State	Processed

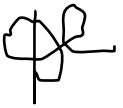
Analysis Info

Acq Time	2015-10-31 08:34	Data File	dd-Blank2-r002.d
Sample Type	Blank	Sample Name	Blank
Dilution	1	Acq Method	Benzos_Z_Drugs_ACN_FA_ISP.m
Position	P1-F9	Sample Info	
Inj Vol	-1	Comment	AM 6.1.1 Benzo and Z by LCQQQ

Sample Chromatogram



ISP FORENSICS
Pocatello
Benzodiazepine Analysis Report

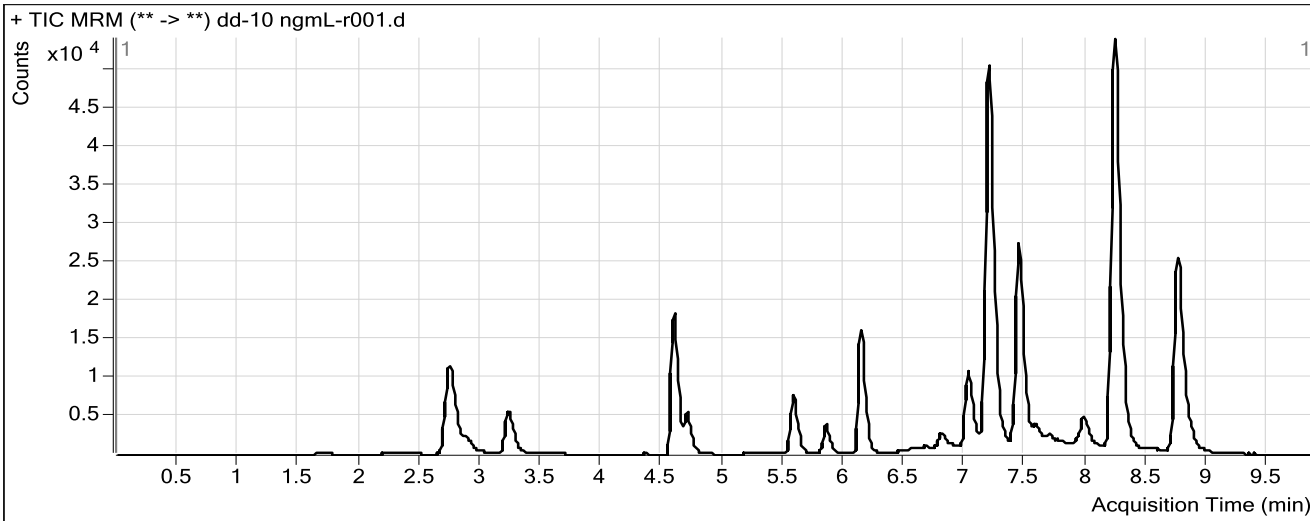


Batch Data Path	C:\MassHunter\Data\COMBINED\10-30-15\10-30-15 full backup\QuantResults\DD-BZQ-102715.batch.bin		
Analysis Time	11/2/2015 10:42 AM	Analyst Name	ISPUser
Report Time	11/2/2015 11:16 AM	Reporter Name	ISPUser
Last Calib Update	11/2/2015 10:42 AM	Batch State	Processed

Analysis Info

Acq Time	2015-10-31 09:03	Data File	dd-10 ngmL-r001.d
Sample Type	Calibration	Sample Name	10 ngmL
Dilution	1	Acq Method	Benzos_Z_Drugs_ACN_FA_ISP.m
Position	P1-F7	Sample Info	
Inj Vol	-1	Comment	AM 6.1.1 Benzo and Z by LCQQQ

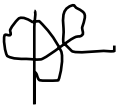
Sample Chromatogram



Results

Compound	ISTD Compound	RT	Response	ISTD Resp	Resp Ratio	Final Conc
7-Aminoclonazepam	7-Aminoflunitrazepam-D7 ISTD	1.690	1290	59949	0.0215	10.3622
7-Aminoflunitrazepam	7-Aminoflunitrazepam-D7 ISTD	2.885	6054	59949	0.1010	8.5529
zopiclone	Oxazepam D5 ISTD	3.222	18110	103682	0.1747	10.3957
zolpidem	Oxazepam D5 ISTD	4.591	52967	103682	0.5109	10.0343
Chlordiazepoxide	Nordiazepam-D5 ISTD	4.704	15318	26036	0.5883	10.2493
quetiapine	Oxazepam D5 ISTD	5.577	18301	103682	0.1765	9.2463
Midazolam	Clonazepam-D4 ISTD	5.850	11289	77331	0.1460	9.8783
Flurazepam	Diazepam-D5 ISTD	6.128	54038	70175	0.7701	9.5471
Nitrazepam	Clonazepam-D4 ISTD	6.804	5240	77331	0.0678	11.3152
alpha-Hydroxyalprazolam	alphanhydroxyalprazolam-D5 ISTD	7.061	1118	28375	0.0394	10.2982
alpha-hydroxytriazolam	Nordiazepam-D5 ISTD	7.110	1589	26036	0.0610	11.0490
Oxazepam	Oxazepam D5 ISTD	7.234	9618	103682	0.0928	11.2583
Nordiazepam	Nordiazepam-D5 ISTD	7.277	3381	26036	0.1299	11.9117
Clonazepam	Clonazepam-D4 ISTD	7.475	6779	77331	0.0877	11.6098
Lorazepam	Oxazepam D5 ISTD	7.575	2755	103682	0.0266	11.1537
Alprazolam	alphanhydroxyalprazolam-D5 ISTD	7.696	3705	28375	0.1306	10.1015
Flunitrazepam	Clonazepam-D4 ISTD	7.964	12330	77331	0.1594	11.5854
Temazepam	Oxazepam D5 ISTD	8.288	17797	103682	0.1716	11.6560
Diazepam	Diazepam-D5 ISTD	8.848	7565	70175	0.1078	11.0899

ISP FORENSICS
Pocatello
Benzodiazepine Analysis Report

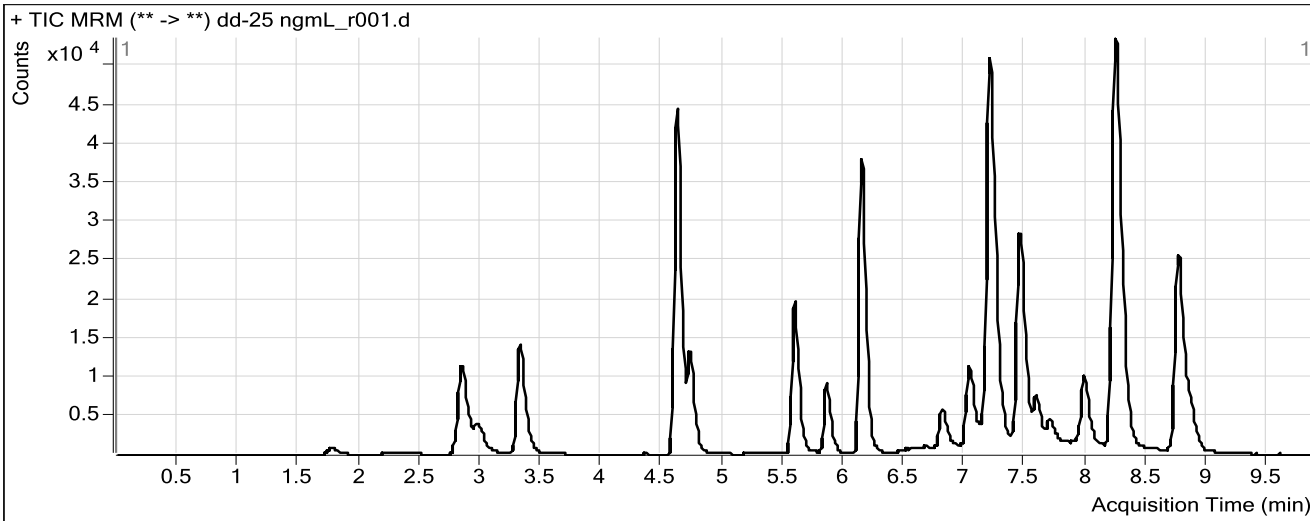


Batch Data Path	C:\MassHunter\Data\COMBINED\10-30-15\10-30-15 full backup\QuantResults\DD-BZQ-102715.batch.bin		
Analysis Time	11/2/2015 10:42 AM	Analyst Name	ISPUser
Report Time	11/2/2015 11:16 AM	Reporter Name	ISPUser
Last Calib Update	11/2/2015 10:42 AM	Batch State	Processed

Analysis Info

Acq Time	2015-10-31 09:18	Data File	dd-25 ngmL_r001.d
Sample Type	Calibration	Sample Name	25 ngmL
Dilution	1	Acq Method	Benzos_Z_Drugs_ACN_FA_ISP.m
Position	P1-F6	Sample Info	
Inj Vol	-1	Comment	AM 6.1.1 Benzo and Z by LCQQQ

Sample Chromatogram



Results

Compound	ISTD Compound	RT	Response	ISTD Resp	Resp Ratio	Final Conc
7-Aminoclonazepam	7-Aminoflunitrazepam-D7 ISTD	1.782	3554	49388	0.0720	28.2113
7-Aminoflunitrazepam	7-Aminoflunitrazepam-D7 ISTD	2.986	14250	49388	0.2885	28.9126
zopiclone	Oxazepam D5 ISTD	3.323	41533	107604	0.3860	22.3401
zolpidem	Oxazepam D5 ISTD	4.617	126605	107604	1.1766	24.5518
Chlordiazepoxide	Nordiazepam-D5 ISTD	4.729	36851	22700	1.6234	24.7766
quetiapine	Oxazepam D5 ISTD	5.585	46687	107604	0.4339	28.3336
Midazolam	Clonazepam-D4 ISTD	5.850	27784	77174	0.3600	25.7946
Flurazepam	Diazepam-D5 ISTD	6.137	123580	70062	1.7639	26.8264
Nitrazepam	Clonazepam-D4 ISTD	6.813	14155	77174	0.1834	25.5033
alpha-Hydroxyalprazolam	alphanhydroxyalprazolam-D5 ISTD	7.061	2987	28091	0.1063	24.2912
alpha-hydroxytriazolam	Nordiazepam-D5 ISTD	7.119	4577	22700	0.2017	26.4210
Oxazepam	Oxazepam D5 ISTD	7.242	23858	107604	0.2217	24.4752
Nordiazepam	Nordiazepam-D5 ISTD	7.286	8202	22700	0.3613	25.4732
Clonazepam	Clonazepam-D4 ISTD	7.484	17113	77174	0.2217	24.3365
Lorazepam	Oxazepam D5 ISTD	7.584	7194	107604	0.0669	25.9035
Alprazolam	alphanhydroxyalprazolam-D5 ISTD	7.696	9521	28091	0.3389	24.7540
Flunitrazepam	Clonazepam-D4 ISTD	7.973	29316	77174	0.3799	24.2720
Temazepam	Oxazepam D5 ISTD	8.288	43580	107604	0.4050	24.0689
Diazepam	Diazepam-D5 ISTD	8.856	18454	70062	0.2634	24.4265

ISP FORENSICS
Pocatello
Benzodiazepine Analysis Report

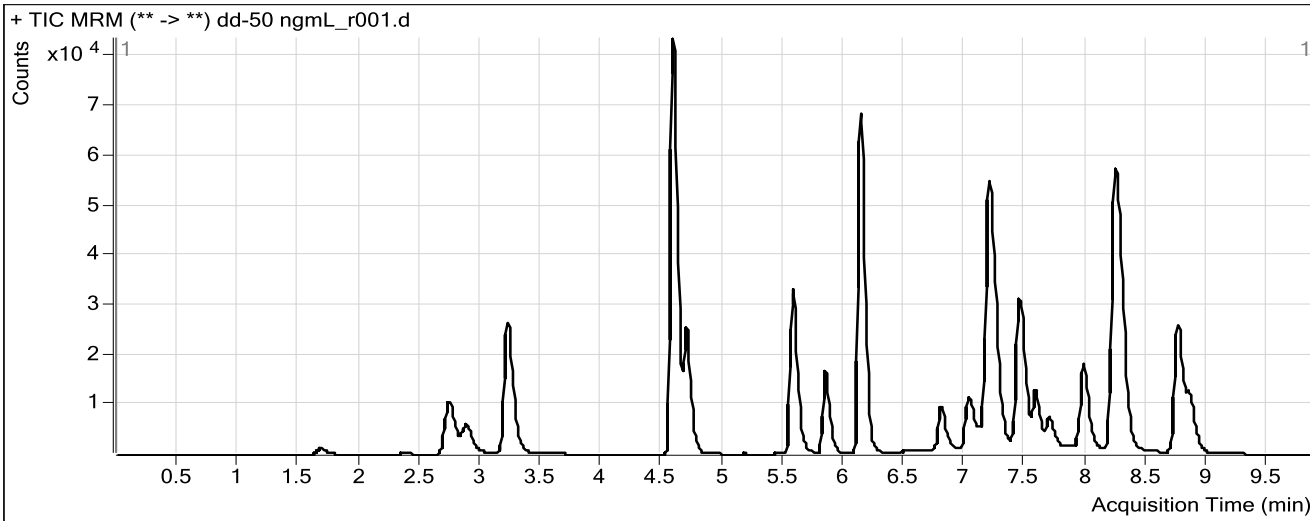


Batch Data Path	C:\MassHunter\Data\COMBINED\10-30-15\10-30-15 full backup\QuantResults\DD-BZQ-102715.batch.bin		
Analysis Time	11/2/2015 10:42 AM	Analyst Name	ISPUser
Report Time	11/2/2015 11:16 AM	Reporter Name	ISPUser
Last Calib Update	11/2/2015 10:42 AM	Batch State	Processed

Analysis Info

Acq Time	2015-10-31 09:33	Data File	dd-50 ngmL_r001.d
Sample Type	Calibration	Sample Name	50 ngmL
Dilution	1	Acq Method	Benzos_Z_Drugs_ACN_FA_ISP.m
Position	P1-F5	Sample Info	
Inj Vol	-1	Comment	AM 6.1.1 Benzo and Z by LCQQQ

Sample Chromatogram



Results

Compound	ISTD Compound	RT	Response	ISTD Resp	Resp Ratio	Final Conc
7-Aminoclonazepam	7-Aminoflunitrazepam-D7 ISTD	1.682	5985	55799	0.1073	40.6910
7-Aminoflunitrazepam	7-Aminoflunitrazepam-D7 ISTD	2.885	25052	55799	0.4490	46.3699
zopiclone	Oxazepam D5 ISTD	3.222	90829	107447	0.8453	48.3315
zolpidem	Oxazepam D5 ISTD	4.583	246444	107447	2.2936	49.0033
Chlordiazepoxide	Nordiazepam-D5 ISTD	4.704	73127	24024	3.0439	44.7138
quetiapine	Oxazepam D5 ISTD	5.569	80644	107447	0.7505	51.8195
Midazolam	Clonazepam-D4 ISTD	5.842	51443	78551	0.6549	47.8191
Flurazepam	Diazepam-D5 ISTD	6.128	228175	71360	3.1975	51.8992
Nitrazepam	Clonazepam-D4 ISTD	6.804	26149	78551	0.3329	43.8388
alpha-Hydroxyalprazolam	alphanhydroxyalprazolam-D5 ISTD	7.061	5934	29139	0.2036	44.6302
alpha-hydroxytriazolam	Nordiazepam-D5 ISTD	7.110	8937	24024	0.3720	45.0735
Oxazepam	Oxazepam D5 ISTD	7.234	44959	107447	0.4184	44.6794
Nordiazepam	Nordiazepam-D5 ISTD	7.277	15326	24024	0.6380	41.7073
Clonazepam	Clonazepam-D4 ISTD	7.475	34365	78551	0.4375	44.8571
Lorazepam	Oxazepam D5 ISTD	7.575	12877	107447	0.1198	45.3386
Alprazolam	alphanhydroxyalprazolam-D5 ISTD	7.696	18895	29139	0.6485	46.5350
Flunitrazepam	Clonazepam-D4 ISTD	7.973	56580	78551	0.7203	43.9197
Temazepam	Oxazepam D5 ISTD	8.288	85241	107447	0.7933	44.7548
Diazepam	Diazepam-D5 ISTD	8.856	36207	71360	0.5074	45.3883

ISP FORENSICS
Pocatello
Benzodiazepine Analysis Report

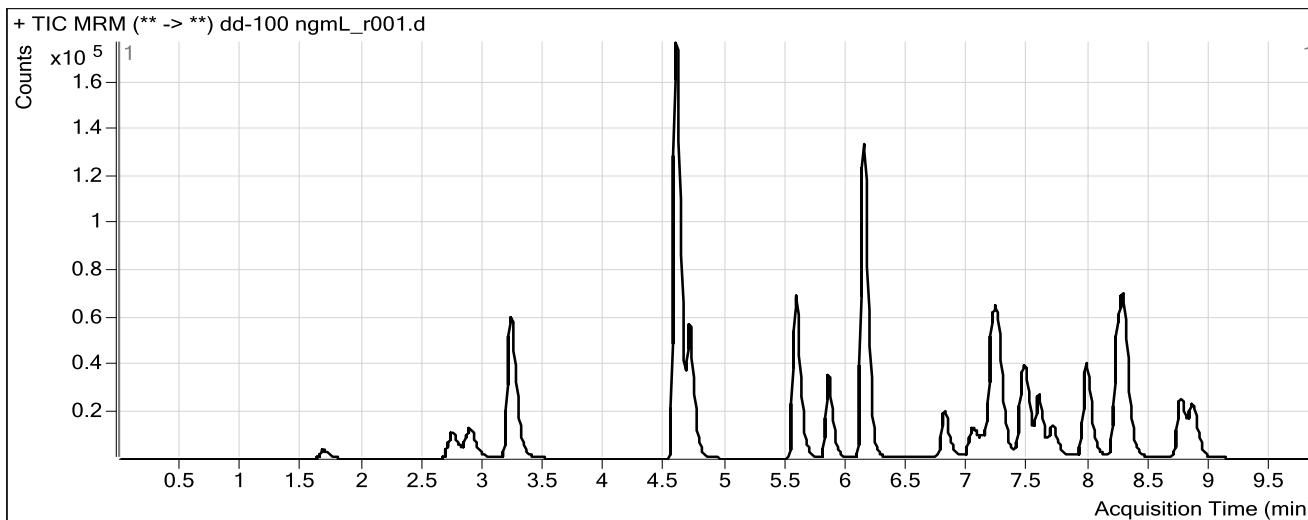


Batch Data Path C:\MassHunter\Data\COMBINED\10-30-15\10-30-15 full backup\QuantResults\DD-BZQ-102715.batch.bin
Analysis Time 11/2/2015 10:42 AM **Analyst Name** ISPUser
Report Time 11/2/2015 11:16 AM **Reporter Name** ISPUser
Last Calib Update 11/2/2015 10:42 AM **Batch State** Processed

Analysis Info

Acq Time 2015-10-31 09:47 **Data File** dd-100 ngmL_r001.d
Sample Type Calibration **Sample Name** 100 ngmL
Dilution 1 **Acq Method** Benzos_Z_Drugs_ACN_FA_ISP.m
Position P1-F4 **Sample Info**
Inj Vol -1 **Comment** AM 6.1.1 Benzo and Z by LCQQQ

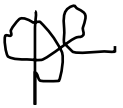
Sample Chromatogram



Results

Compound	ISTD Compound	RT	Response	ISTD Resp	Resp Ratio	Final Conc
7-Aminoclonazepam	7-Aminoflunitrazepam-D7 ISTD	1.682	15760	58506	0.2694	97.8651
7-Aminoflunitrazepam	7-Aminoflunitrazepam-D7 ISTD	2.885	58922	58506	1.0071	107.3991
zopiclone	Oxazepam D5 ISTD	3.222	205421	106501	1.9288	109.7830
zolpidem	Oxazepam D5 ISTD	4.583	534092	106501	5.0149	109.0615
Chlordiazepoxide	Nordiazepam-D5 ISTD	4.704	167853	24657	6.8076	97.5488
quetiapine	Oxazepam D5 ISTD	5.569	174068	106501	1.6344	117.3715
Midazolam	Clonazepam-D4 ISTD	5.842	115571	78340	1.4753	109.6892
Flurazepam	Diazepam-D5 ISTD	6.128	468722	70821	6.6184	112.4415
Nitrazepam	Clonazepam-D4 ISTD	6.804	59734	78340	0.7625	96.5155
alpha-Hydroxyalprazolam	alphanhydroxyalprazolam-D5 ISTD	7.061	12737	26781	0.4756	101.4127
alpha-hydroxytriazolam	Nordiazepam-D5 ISTD	7.119	19706	24657	0.7992	92.0056
Oxazepam	Oxazepam D5 ISTD	7.234	102463	106501	0.9621	100.7980
Nordiazepam	Nordiazepam-D5 ISTD	7.277	37404	24657	1.5170	93.4748
Clonazepam	Clonazepam-D4 ISTD	7.475	76762	78340	0.9799	96.6872
Lorazepam	Oxazepam D5 ISTD	7.575	27386	106501	0.2571	95.8607
Alprazolam	alphanhydroxyalprazolam-D5 ISTD	7.688	40751	26781	1.5216	108.0610
Flunitrazepam	Clonazepam-D4 ISTD	7.973	131107	78340	1.6736	99.2857
Temazepam	Oxazepam D5 ISTD	8.288	191114	106501	1.7945	98.2557
Diazepam	Diazepam-D5 ISTD	8.848	80751	70821	1.1402	100.0253

ISP FORENSICS
Pocatello
Benzodiazepine Analysis Report

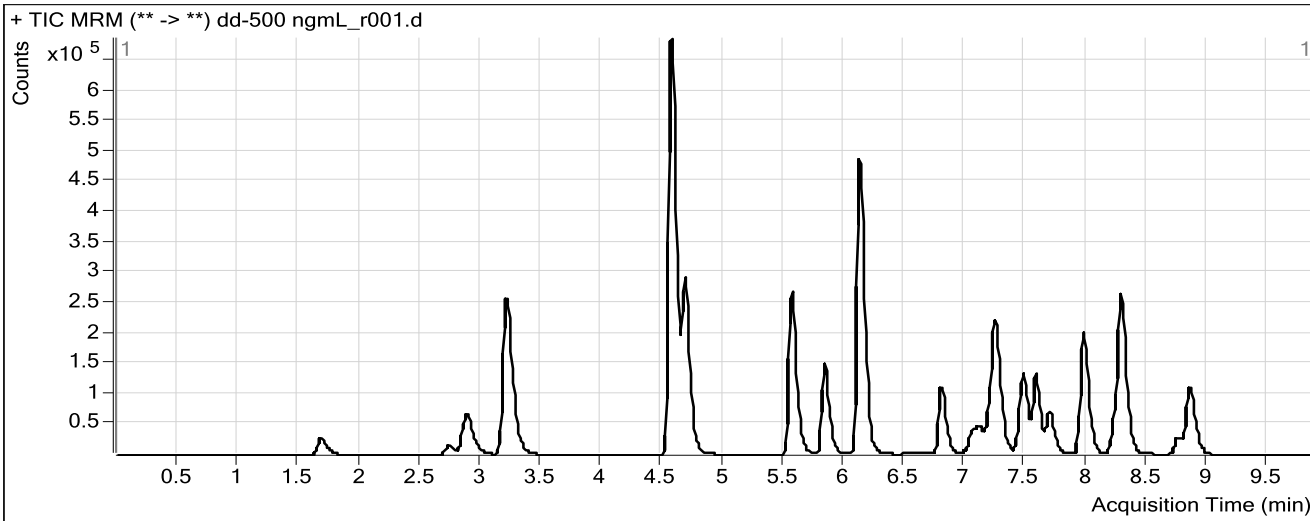


Batch Data Path	C:\MassHunter\Data\COMBINED\10-30-15\10-30-15 full backup\QuantResults\DD-BZQ-102715.batch.bin		
Analysis Time	11/2/2015 10:42 AM	Analyst Name	ISPUser
Report Time	11/2/2015 11:16 AM	Reporter Name	ISPUser
Last Calib Update	11/2/2015 10:42 AM	Batch State	Processed

Analysis Info

Acq Time	2015-10-31 10:02	Data File	dd-500 ngmL_r001.d
Sample Type	Calibration	Sample Name	500 ngmL
Dilution	1	Acq Method	Benzos_Z_Drugs_ACN_FA_ISP.m
Position	P1-F3	Sample Info	
Inj Vol	-1	Comment	AM 6.1.1 Benzo and Z by LCQQQ

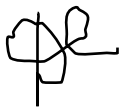
Sample Chromatogram



Results

Compound	ISTD Compound	RT	Response	ISTD Resp	Resp Ratio	Final Conc
7-Aminoclonazepam	7-Aminoflunitrazepam-D7 ISTD	1.682	118362	74240	1.5943	557.4947
7-Aminoflunitrazepam	7-Aminoflunitrazepam-D7 ISTD	2.885	330297	74240	4.4490	494.4710
zopiclone	Oxazepam D5 ISTD	3.214	943374	110459	8.5405	489.3266
zolpidem	Oxazepam D5 ISTD	4.575	2268540	110459	20.5374	466.1844
Chlordiazepoxide	Nordiazepam-D5 ISTD	4.687	907107	23497	38.6056	544.3581
quetiapine	Oxazepam D5 ISTD	5.560	684022	110459	6.1926	455.4244
Midazolam	Clonazepam-D4 ISTD	5.842	503468	83314	6.0430	472.0787
Flurazepam	Diazepam-D5 ISTD	6.120	1800900	75988	23.6999	431.6691
Nitrazepam	Clonazepam-D4 ISTD	6.804	335225	83314	4.0236	495.5232
alpha-Hydroxyalprazolam	alphahydroxyalprazolam-D5 ISTD	7.061	81900	32629	2.5101	523.7852
alpha-hydroxytriazolam	Nordiazepam-D5 ISTD	7.119	104608	23497	4.4520	502.8743
Oxazepam	Oxazepam D5 ISTD	7.234	505444	110459	4.5759	484.8638
Nordiazepam	Nordiazepam-D5 ISTD	7.277	195792	23497	8.3327	504.7283
Clonazepam	Clonazepam-D4 ISTD	7.475	413405	83314	4.9620	488.3783
Lorazepam	Oxazepam D5 ISTD	7.575	137688	110459	1.2465	467.1202
Alprazolam	alphahydroxyalprazolam-D5 ISTD	7.696	222252	32629	6.8116	483.3991
Flunitrazepam	Clonazepam-D4 ISTD	7.973	675849	83314	8.1121	487.8462
Temazepam	Oxazepam D5 ISTD	8.288	975650	110459	8.8327	481.6208
Diazepam	Diazepam-D5 ISTD	8.848	428237	75988	5.6356	500.1644

ISP FORENSICS
Pocatello
Benzodiazepine Analysis Report

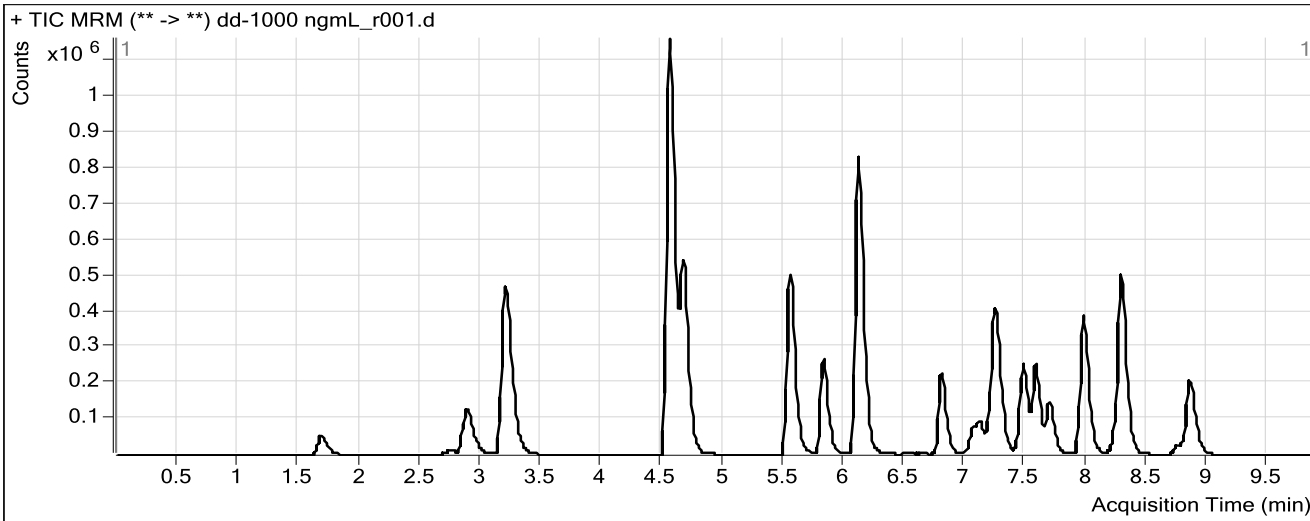


Batch Data Path	C:\MassHunter\Data\COMBINED\10-30-15\10-30-15 full backup\QuantResults\DD-BZQ-102715.batch.bin		
Analysis Time	11/2/2015 10:42 AM	Analyst Name	ISPUser
Report Time	11/2/2015 11:16 AM	Reporter Name	ISPUser
Last Calib Update	11/2/2015 10:42 AM	Batch State	Processed

Analysis Info

Acq Time	2015-10-31 10:17	Data File	dd-1000 ngmL_r001.d
Sample Type	Calibration	Sample Name	1000 ngmL
Dilution	1	Acq Method	Benzos_Z_Drugs_ACN_FA_ISP.m
Position	P1-F2	Sample Info	
Inj Vol	-1	Comment	AM 6.1.1 Benzo and Z by LCQQQ

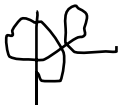
Sample Chromatogram



Results

Compound	ISTD Compound	RT	Response	ISTD Resp	Resp Ratio	Final Conc
7-Aminoclonazepam	7-Aminoflunitrazepam-D7 ISTD	1.690	231255	72286	3.1992	1097.1344
7-Aminoflunitrazepam	7-Aminoflunitrazepam-D7 ISTD	2.894	626482	72286	8.6667	997.2434
zopiclone	Oxazepam D5 ISTD	3.197	1861291	104555	17.8020	1034.8631
zolpidem	Oxazepam D5 ISTD	4.558	4346059	104555	41.5672	998.1262
Chlordiazepoxide	Nordiazepam-D5 ISTD	4.671	1751106	23341	75.0221	1057.0194
quetiapine	Oxazepam D5 ISTD	5.552	1365264	104555	13.0579	964.5875
Midazolam	Clonazepam-D4 ISTD	5.823	934395	81767	11.4276	948.1316
Flurazepam	Diazepam-D5 ISTD	6.112	3245725	75311	43.0976	837.5791
Nitrazepam	Clonazepam-D4 ISTD	6.804	678968	81767	8.3037	1016.8927
alpha-Hydroxyalprazolam	alphanhydroxyalprazolam-D5 ISTD	7.061	165505	31894	5.1892	1073.6487
alpha-hydroxytriazolam	Nordiazepam-D5 ISTD	7.119	204685	23341	8.7693	1012.9413
Oxazepam	Oxazepam D5 ISTD	7.234	978394	104555	9.3577	1026.7819
Nordiazepam	Nordiazepam-D5 ISTD	7.286	381792	23341	16.3570	1013.8132
Clonazepam	Clonazepam-D4 ISTD	7.475	826786	81767	10.1115	1028.1033
Lorazepam	Oxazepam D5 ISTD	7.575	286521	104555	2.7404	1054.0928
Alprazolam	alphanhydroxyalprazolam-D5 ISTD	7.696	457894	31894	14.3567	1026.7310
Flunitrazepam	Clonazepam-D4 ISTD	7.973	1334362	81767	16.3191	1027.1752
Temazepam	Oxazepam D5 ISTD	8.288	1940275	104555	18.5575	1034.1082
Diazepam	Diazepam-D5 ISTD	8.856	826489	75311	10.9743	1006.6242

ISP FORENSICS
Pocatello
Benzodiazepine Analysis Report

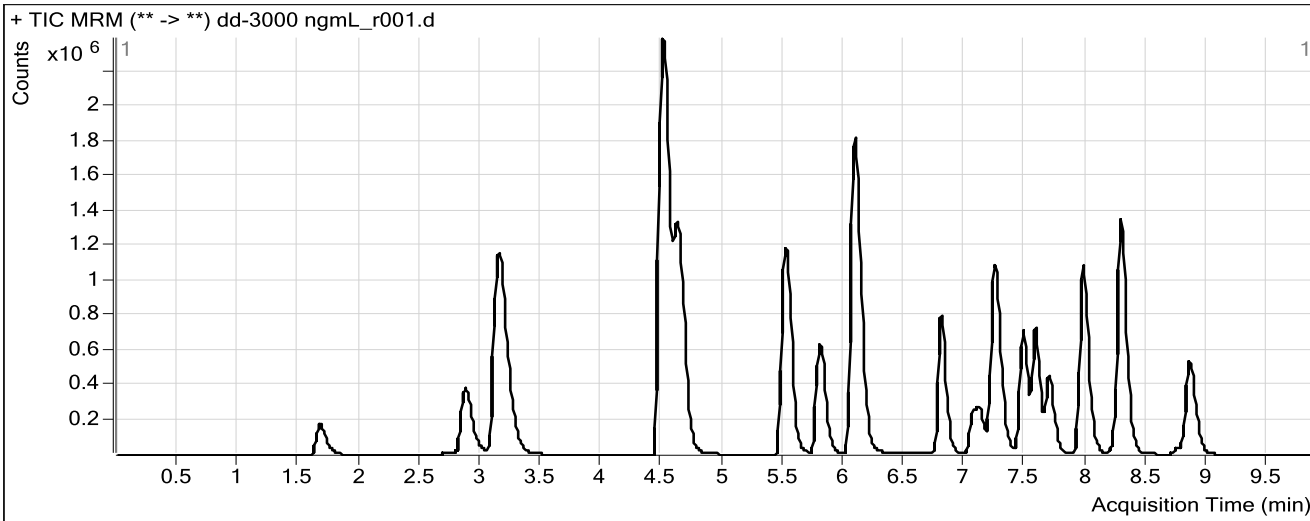


Batch Data Path	C:\MassHunter\Data\COMBINED\10-30-15\10-30-15 full backup\QuantResults\DD-BZQ-102715.batch.bin		
Analysis Time	11/2/2015 10:42 AM	Analyst Name	ISPUser
Report Time	11/2/2015 11:16 AM	Reporter Name	ISPUser
Last Calib Update	11/2/2015 10:42 AM	Batch State	Processed

Analysis Info

Acq Time	2015-10-31 10:31	Data File	dd-3000 ngmL_r001.d
Sample Type	Calibration	Sample Name	3000 ngmL
Dilution	1	Acq Method	Benzos_Z_Drugs_ACN_FA_ISP.m
Position	P1-F1	Sample Info	
Inj Vol	-1	Comment	AM 6.1.1 Benzo and Z by LCQQQ

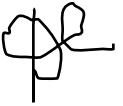
Sample Chromatogram



Results

Compound	ISTD Compound	RT	Response	ISTD Resp	Resp Ratio	Final Conc
7-Aminoclonazepam	7-Aminoflunitrazepam-D7 ISTD	1.682	780877	88198	8.8537	2872.2240
7-Aminoflunitrazepam	7-Aminoflunitrazepam-D7 ISTD	2.877	1996981	88198	22.6420	3002.3105
zopiclone	Oxazepam D5 ISTD	3.147	5550009	114912	48.2980	2966.1825
zolpidem	Oxazepam D5 ISTD	4.500	11423941	114912	99.4148	3059.1659
Chlordiazepoxide	Nordiazepam-D5 ISTD	4.637	5231208	25428	205.7295	2905.5684
quetiapine	Oxazepam D5 ISTD	5.510	3987110	114912	34.6971	2569.4581
Midazolam	Clonazepam-D4 ISTD	5.798	2738163	99920	27.4036	3195.8529
Flurazepam	Diazepam-D5 ISTD	6.078	9135355	81408	112.2170	
Nitrazepam	Clonazepam-D4 ISTD	6.804	2472022	99920	24.7401	2995.4072
alpha-Hydroxyalprazolam	alphahydroxyalprazolam-D5 ISTD	7.061	552061	38356	14.3932	2911.1088
alpha-hydroxytriazolam	Nordiazepam-D5 ISTD	7.119	591294	25428	23.2540	2994.2635
Oxazepam	Oxazepam D5 ISTD	7.234	2709575	114912	23.5796	2991.2951
Nordiazepam	Nordiazepam-D5 ISTD	7.277	1098967	25428	43.2194	2993.4442
Clonazepam	Clonazepam-D4 ISTD	7.475	2551308	99920	25.5336	2990.0646
Lorazepam	Oxazepam D5 ISTD	7.575	809730	114912	7.0465	2984.9971
Alprazolam	alphahydroxyalprazolam-D5 ISTD	7.688	1551171	38356	40.4419	2984.5773
Flunitrazepam	Clonazepam-D4 ISTD	7.973	3898483	99920	39.0161	2988.8967
Temazepam	Oxazepam D5 ISTD	8.288	5632590	114912	49.0166	2990.1762
Diazepam	Diazepam-D5 ISTD	8.848	2291979	81408	28.1542	2996.9279

ISP FORENSICS
Pocatello
Benzodiazepine Analysis Report

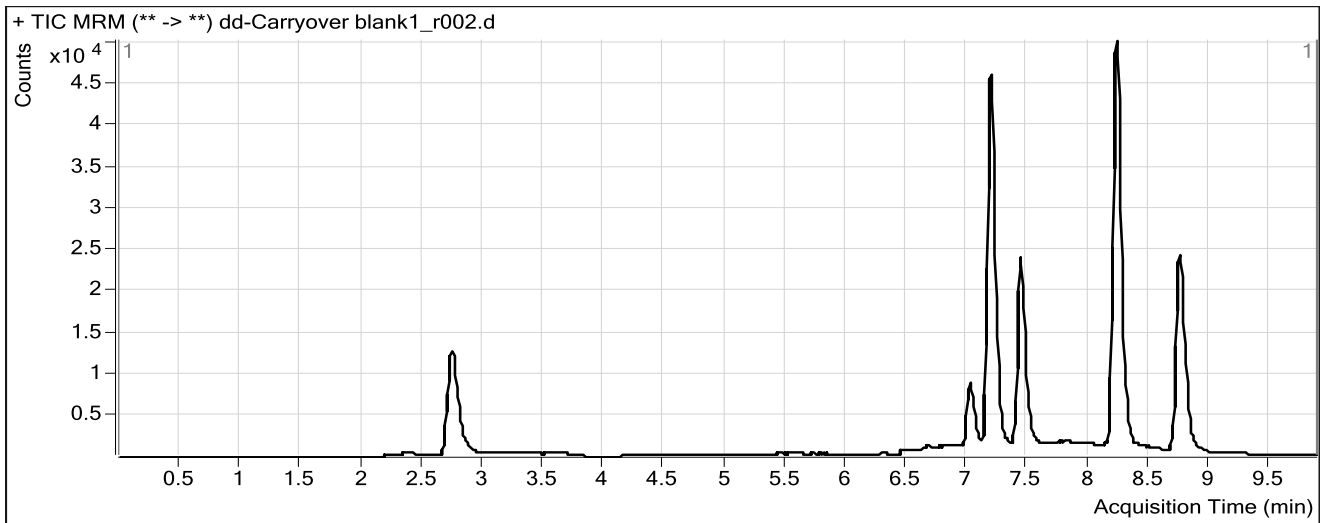


Batch Data Path	C:\MassHunter\Data\COMBINED\10-30-15\10-30-15 full backup\QuantResults\DD-BZQ-102715.ba		
Analysis Time	11/2/2015 10:42 AM	Analyst Name	ISPUser
Report Time	11/2/2015 11:16 AM	Reporter Name	ISPUser
Last Calib Update	11/2/2015 10:42 AM	Batch State	Processed

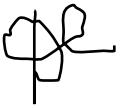
Analysis Info

Acq Time	2015-10-31 10:46	Data File	dd-Carryover blank1_r002.d
Sample Type	Blank	Sample Name	Blank
Dilution	1	Acq Method	Benzos_Z_Drugs_ACN_FA_ISP.m
Position	P1-F9	Sample Info	
Inj Vol	-1	Comment	AM 6.1.1 Benzo and Z by LCQQQ

Sample Chromatogram



ISP FORENSICS
Pocatello
Benzodiazepine Analysis Report

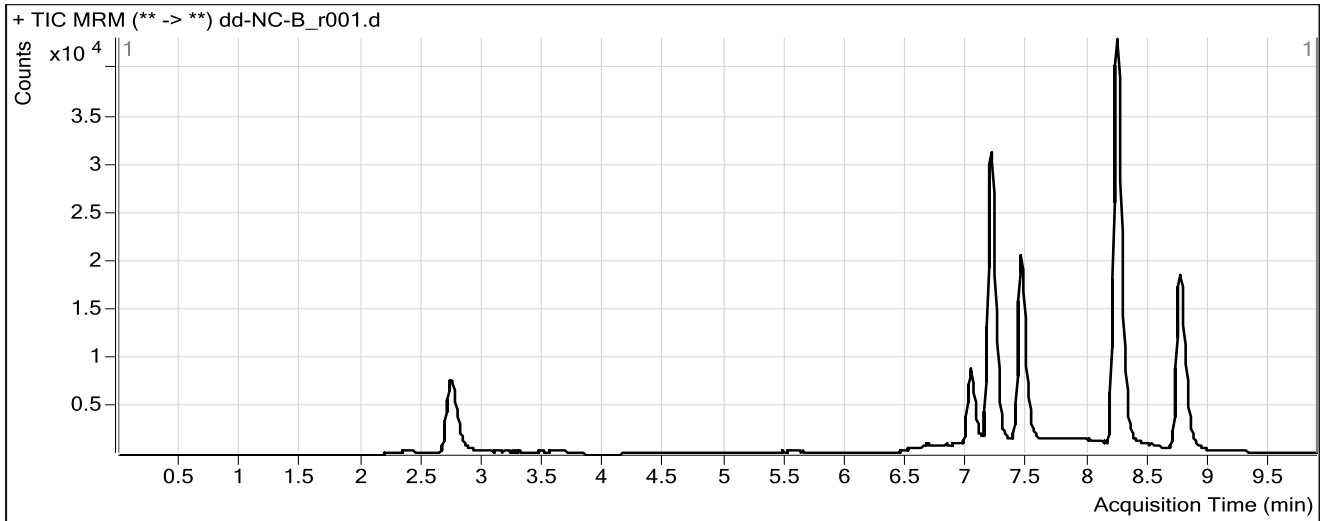


Batch Data Path	C:\MassHunter\Data\COMBINED\10-30-15\10-30-15 full backup\QuantResults\DD-BZQ-102715.ba		
Analysis Time	11/2/2015 10:42 AM	Analyst Name	ISPUser
Report Time	11/2/2015 11:16 AM	Reporter Name	ISPUser
Last Calib Update	11/2/2015 10:42 AM	Batch State	Processed

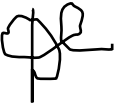
Analysis Info

Acq Time	2015-10-31 11:01	Data File	dd-NC-B_r001.d
Sample Type	Sample	Sample Name	Negative Blood Control
Dilution	1	Acq Method	Benzos_Z_Drugs_ACN_FA_ISP.m
Position	P1-E9	Sample Info	UTAK Negative Whole Blood LOT B0689
Inj Vol	-1	Comment	AM 6.1.1 Benzo and Z by LCQQQ

Sample Chromatogram



ISP FORENSICS
Pocatello
Benzodiazepine Analysis Report

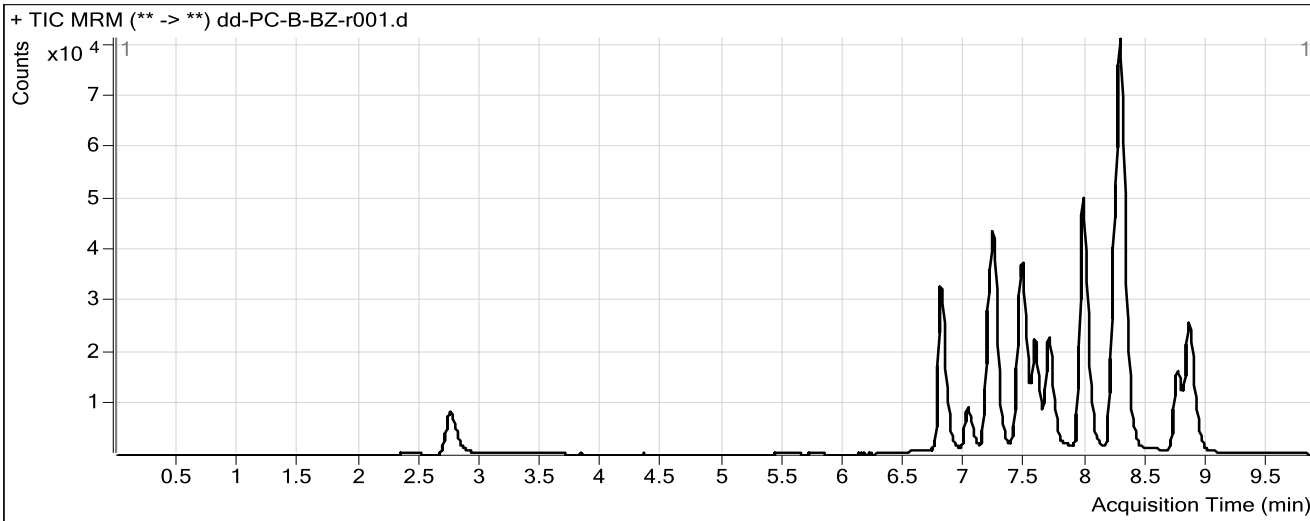


Batch Data Path C:\MassHunter\Data\COMBINED\10-30-15\10-30-15 full backup\QuantResults\DD-BZQ-102715.batch.bin
Analysis Time 11/2/2015 10:42 AM **Analyst Name** ISPUser
Report Time 11/2/2015 11:16 AM **Reporter Name** ISPUser
Last Calib Update 11/2/2015 10:42 AM **Batch State** Processed

Analysis Info

Acq Time 2015-10-31 11:15 **Data File** dd-PC-B-BZ-r001.d
Sample Type Sample **Sample Name** Positive Blood Control
Dilution 1 **Acq Method** Benzos_Z_Drugs_ACN_FA_ISP.m
Position P1-E8 **Sample Info** 200 ng/mL Benzodiazepines Mix Cerilliant lot FE012413-02 in neg LOT B0
Inj Vol -1 **Comment** AM 6.1.1 Benzo and Z by LCQQQ

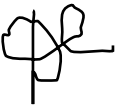
Sample Chromatogram



Results

Compound	ISTD Compound	RT	Response	ISTD Resp	Resp Ratio	Final Conc
Nitrazepam	Clonazepam-D4 ISTD	6.796	100075	50780	1.9708	244.5274
Oxazepam	Oxazepam D5 ISTD	7.234	85390	48094	1.7755	185.5401
Clonazepam	Clonazepam-D4 ISTD	7.475	91293	50780	1.7978	175.5120
Lorazepam	Oxazepam D5 ISTD	7.575	20774	48094	0.4319	160.5231
Alprazolam	alphanhydroxyalprazolam-D5 ISTD	7.688	68118	23311	2.9221	206.9928
Flunitrazepam	Clonazepam-D4 ISTD	7.964	164895	50780	3.2472	191.8444
Temazepam	Oxazepam D5 ISTD	8.279	265929	48094	5.5293	300.0748
Diazepam	Diazepam-D5 ISTD	8.848	92075	42296	2.1770	190.4002

ISP FORENSICS
Pocatello
Benzodiazepine Analysis Report



Batch Data Path	C:\MassHunter\Data\COMBINED\10-30-15\10-30-15 full backup\QuantResults\DD-BZQ-102715.ba		
Analysis Time	11/2/2015 10:42 AM	Analyst Name	ISPUser
Report Time	11/2/2015 11:16 AM	Reporter Name	ISPUser
Last Calib Update	11/2/2015 10:42 AM	Batch State	Processed

Analysis Info

Acq Time	2015-10-31 16:22	Data File	dd-Carryover blank3_r001.d
Sample Type	Blank	Sample Name	Blank
Dilution	1	Acq Method	Benzos_Z_Drugs_ACN_FA_ISP.m
Position	P1-F9	Sample Info	
Inj Vol	-1	Comment	AM 6.1.1 Benzo and Z by LCQQQ

Sample Chromatogram

